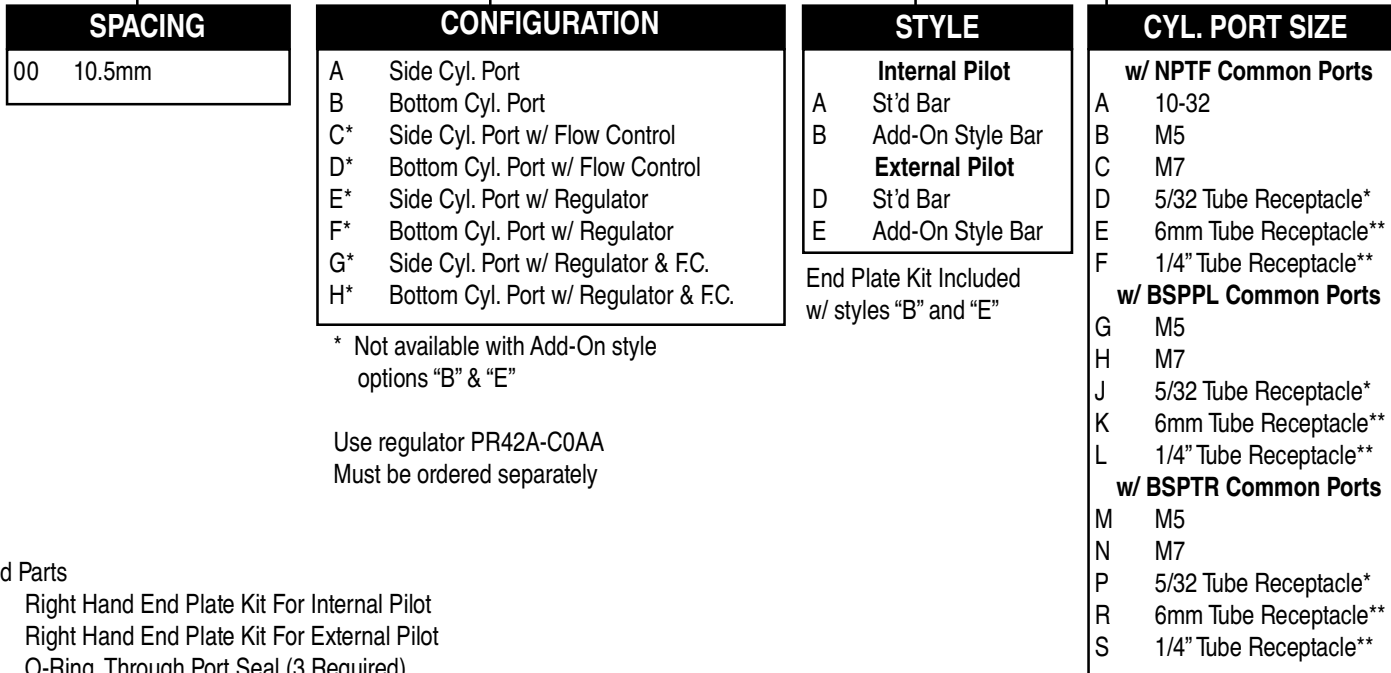


How To Order Non Plug-In Circuit Bar For 32 Series

EBM 32A - XX X X X - XX - 9

Valves, Cover Plates Assembled to Bar
Number of stations



* Not available with Add-On style options "B" & "E"

Use regulator PR42A-C0AA
Must be ordered separately

End Plate Kit Included
w/ styles "B" and "E"

End Plate Kits and Parts

- M-32004-01(*) Right Hand End Plate Kit For Internal Pilot
- M-32004-02(*) Right Hand End Plate Kit For External Pilot
- 17014-01 O-Ring, Through Port Seal (3 Required)
- 35240 End Plate Mounting Screw (2 Required)
- 28454 Isolator Disc Inlet and Exhaust
- 28455 Isolator Disc Pilot Supply Port
- 32625 6mm Tube Receptacle
- 32627 1/4" Tube Receptacle

(*) = P - BSPPL, T - BSPTR, Blank - St'd NPTF

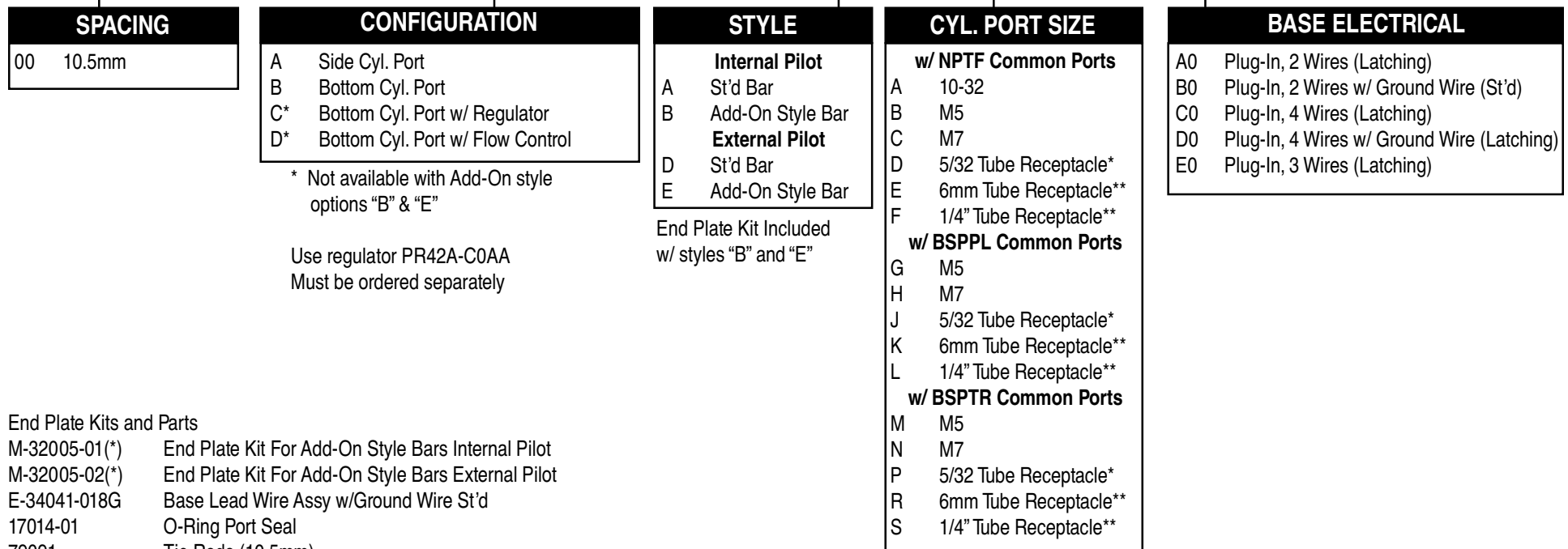
* Pressed-In

** Screw-In

How To Order Plug-In Circuit Bar For 32 Series

ECD 32A - XX X X X - XX XX - 9

Valves, Cover Plates Assembled to Bar
Number of stations



* Not available with Add-On style options "B" & "E"

Use regulator PR42A-C0AA
Must be ordered separately

End Plate Kit Included
w/ styles "B" and "E"

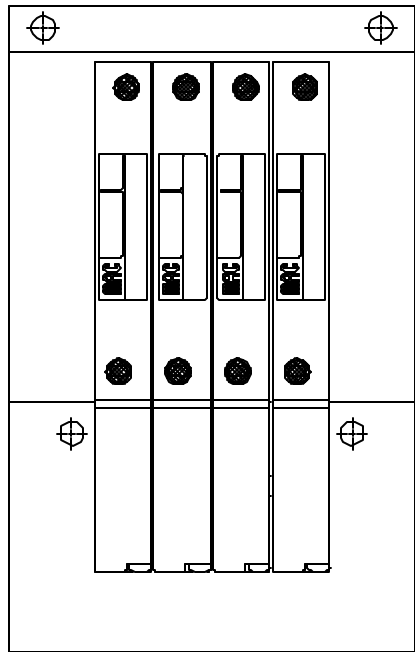
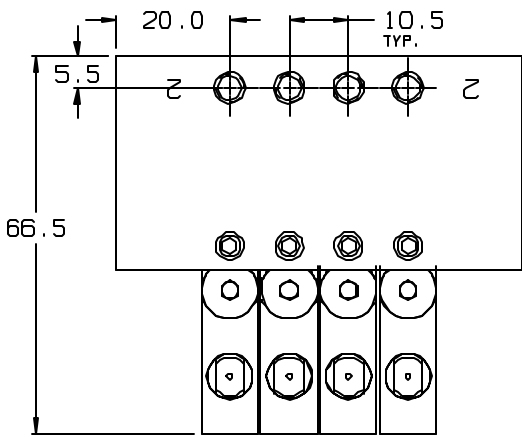
* Pressed-In

** Screw-In

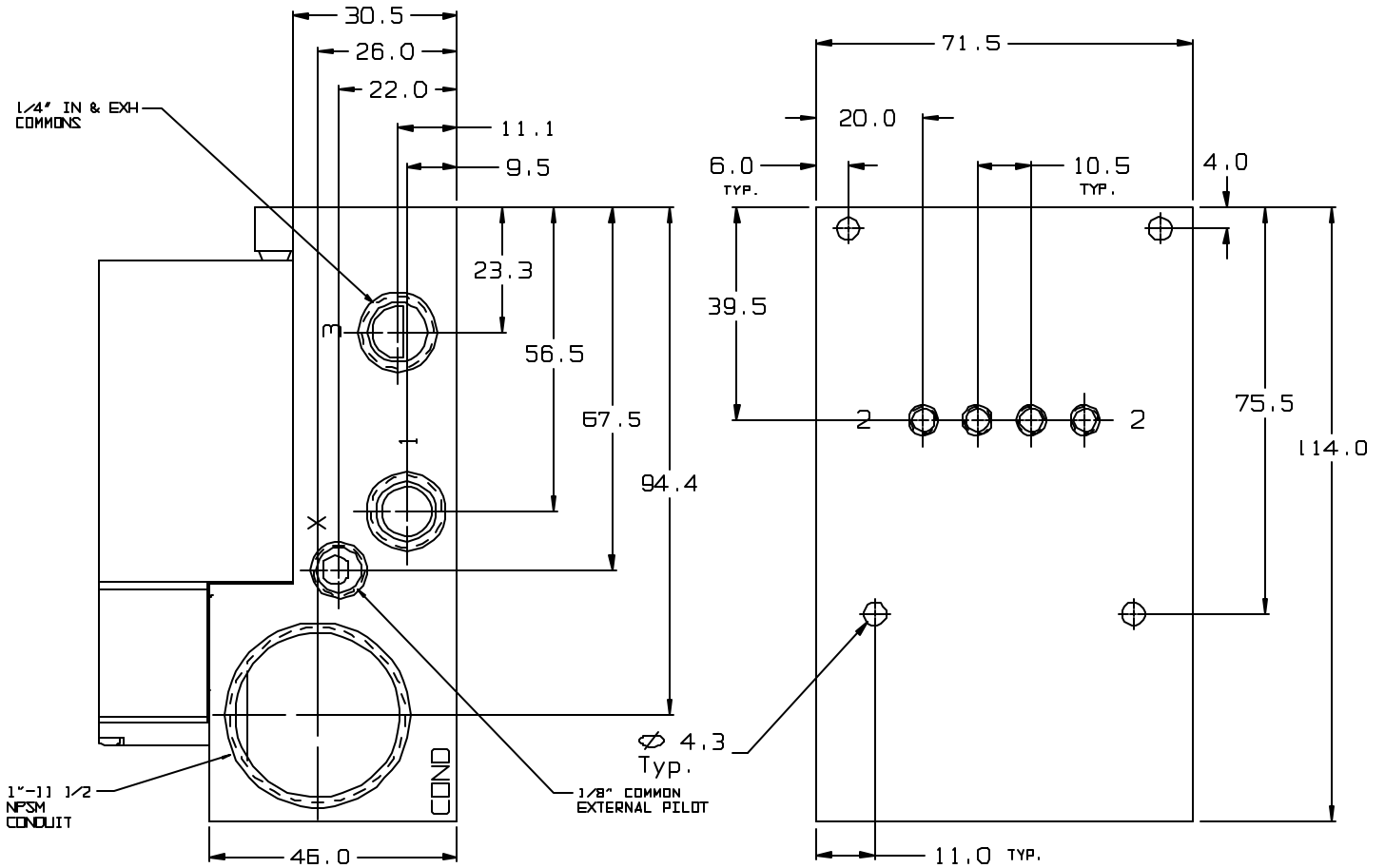
End Plate Kits and Parts

- M-32005-01(*) End Plate Kit For Add-On Style Bars Internal Pilot
 - M-32005-02(*) End Plate Kit For Add-On Style Bars External Pilot
 - E-34041-018G Base Lead Wire Assy w/Ground Wire St'd
 - 17014-01 O-Ring Port Seal
 - 79091 Tie Rods (10.5mm)
 - 79091-04/-08 Tie Rod (4 Station - 8 Station)
 - 28485 Isolator Disc. Inlet & Exhaust
 - 28455 Common Pilot Supply Isolator
 - 32625 6mm Tube Receptacle
 - 32627 1/4" Tube Receptacle
- (*) = P - BSPPL, T - BSPTR, Blank - St'd NPTF

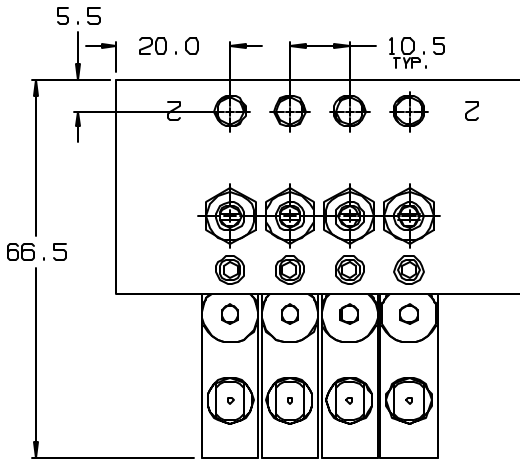
32 SERIES PLUG-IN BAR



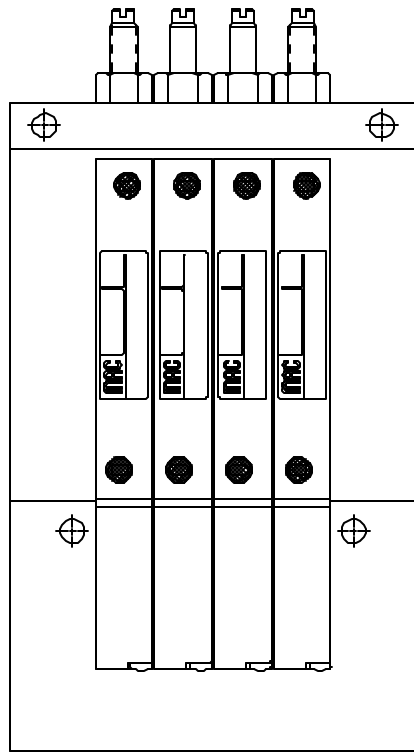
NOTE:
 -ALL DIMENSIONS SHOWN
 ARE IN MILLIMETERS
 -TOLERANCES ON DIMENSIONS ± 0.2
 -SIDE OR BOTTOM PORTS AVAILABLE



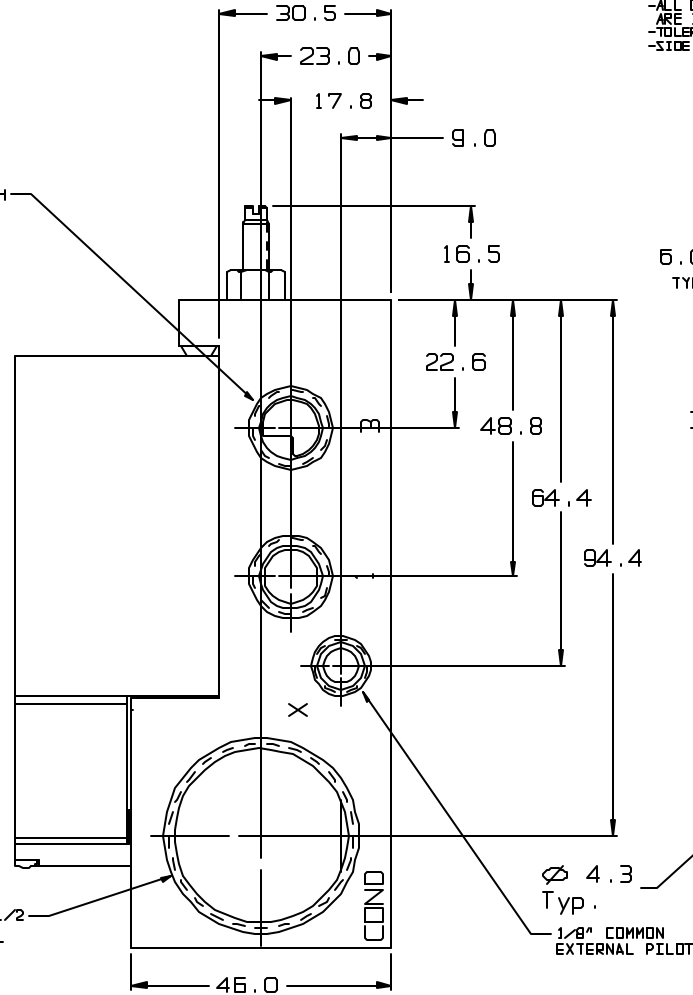
32 SERIES PLUG-IN BAR WITH SIDE FLOW CONTROL



NOTE:
-ALL DIMENSIONS SHOWN
ARE IN MILLIMETERS
-TOLERANCES IN DIMENSIONS ± 0.2
-SIDE OR BOTTOM PORTS AVAILABLE

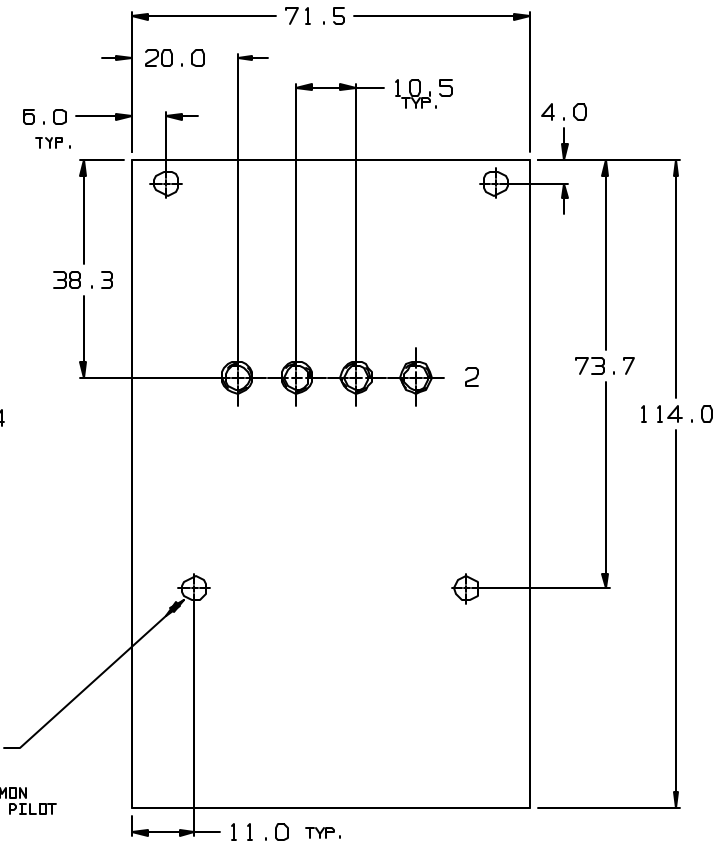


1/4" IN & EXH
COMMONS

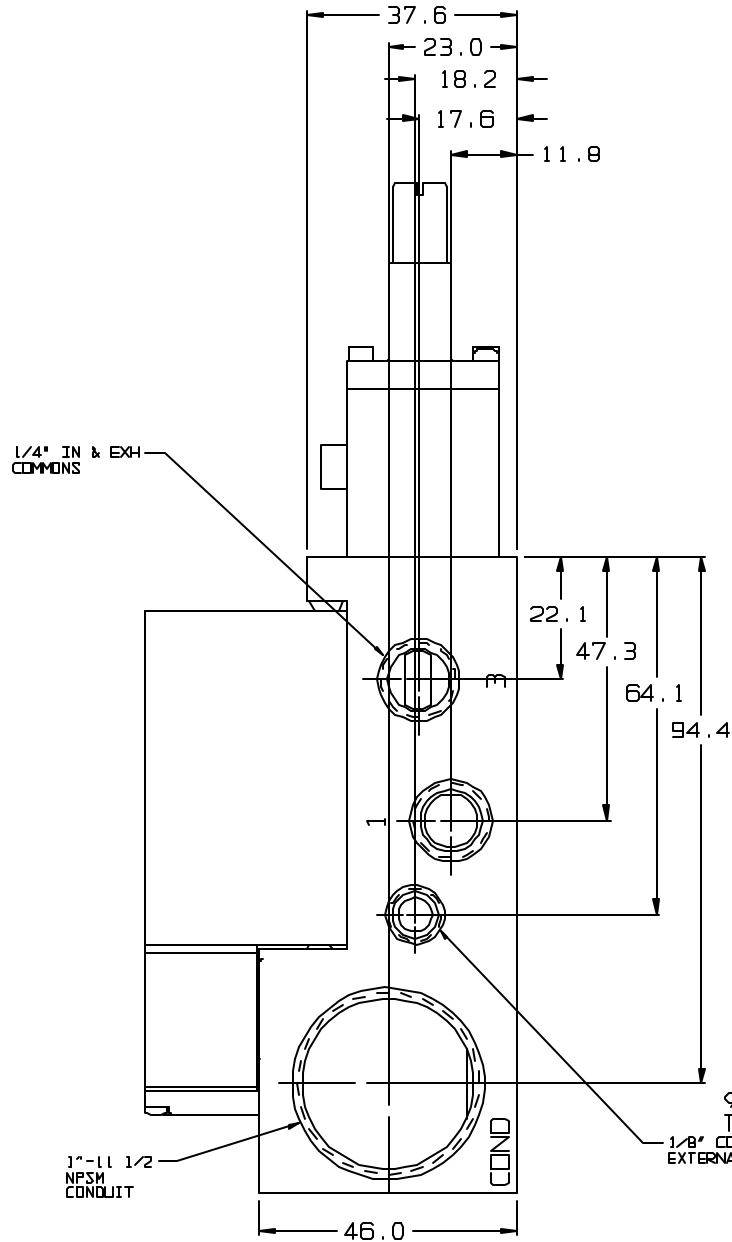
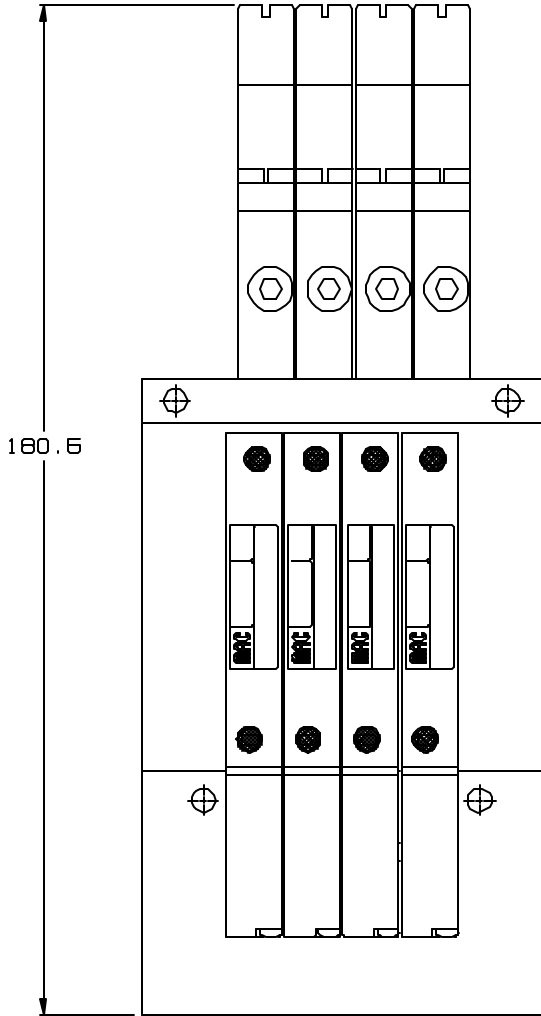
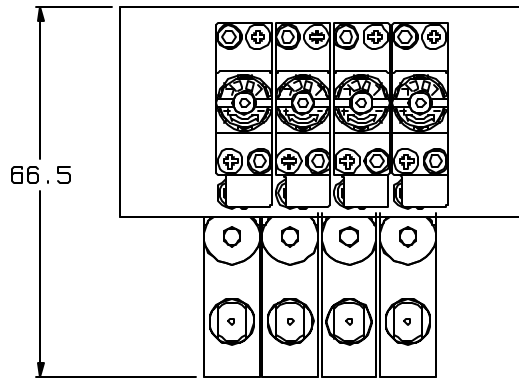


1" - 1 1/2"
NPSM
CONDUIT

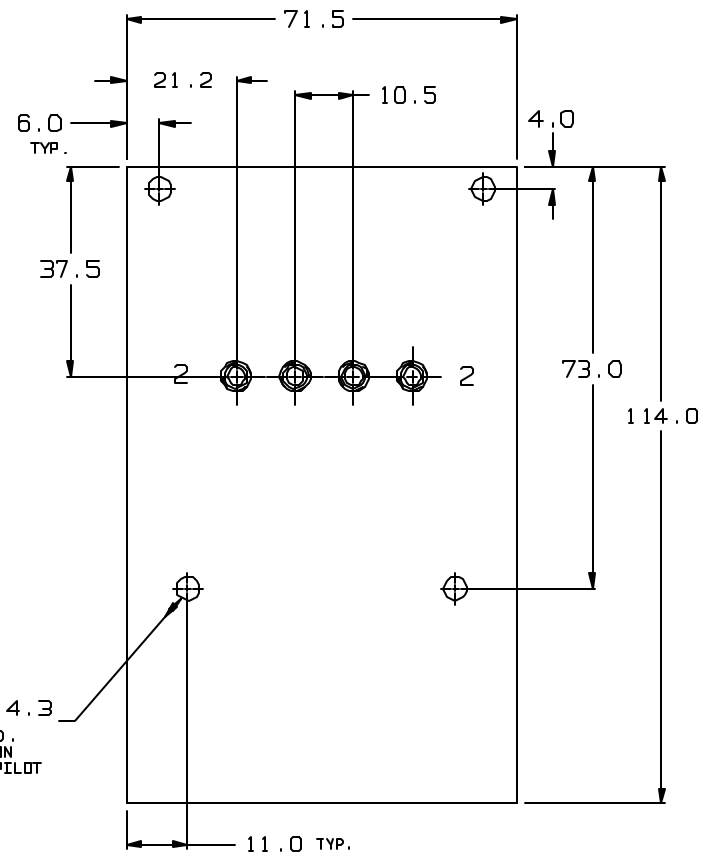
∅ 4.3
Typ.
1/8" COMMON
EXTERNAL PILOT



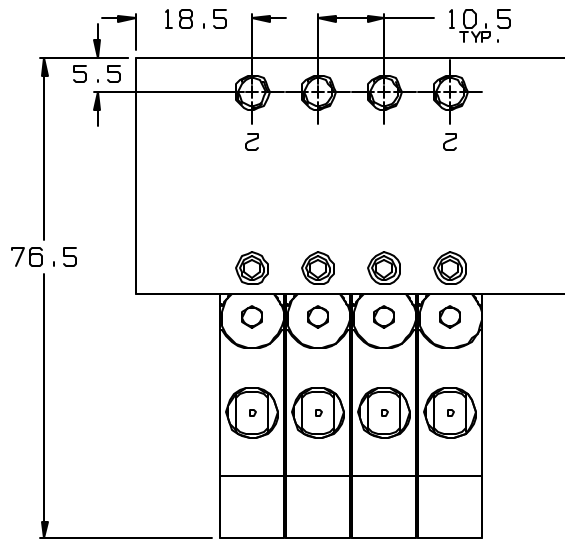
32 SERIES PLUG-IN BAR WITH SIDE REGULATOR



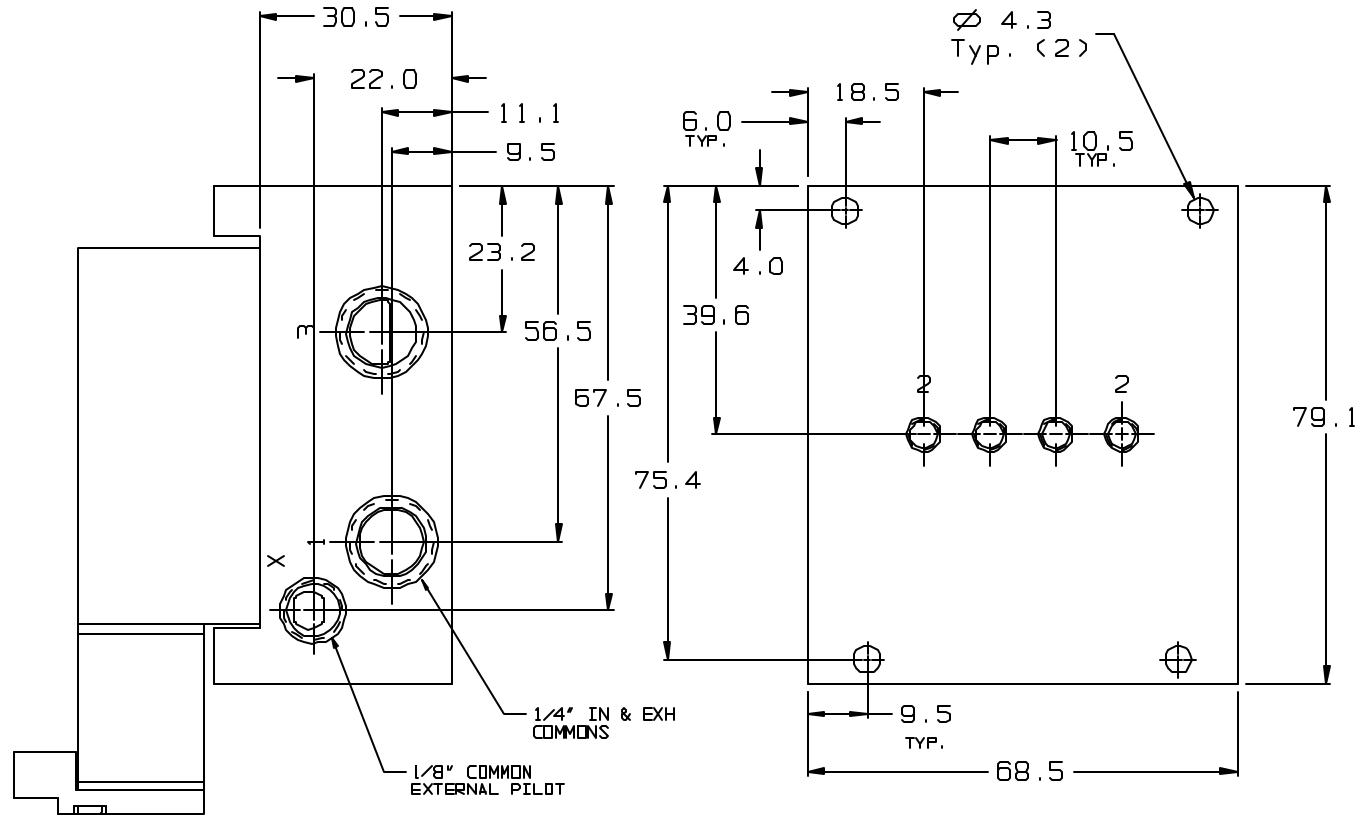
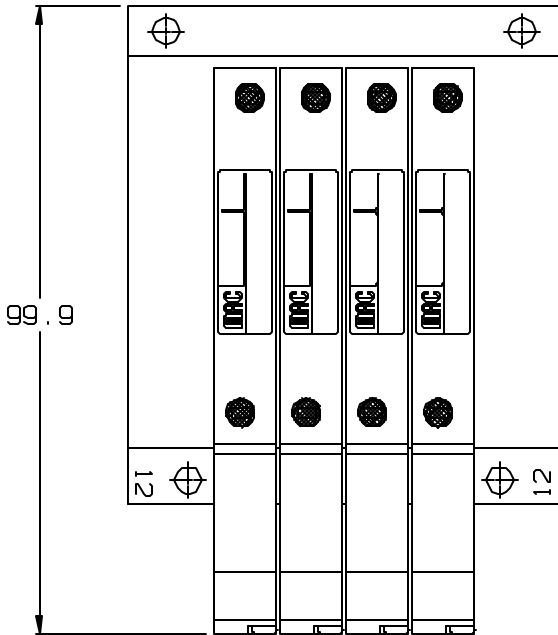
NOTE:
-ALL DIMENSIONS SHOWN
-ARE IN MILLIMETERS
-TOLERANCES ON DIMENSIONS ± 0.2



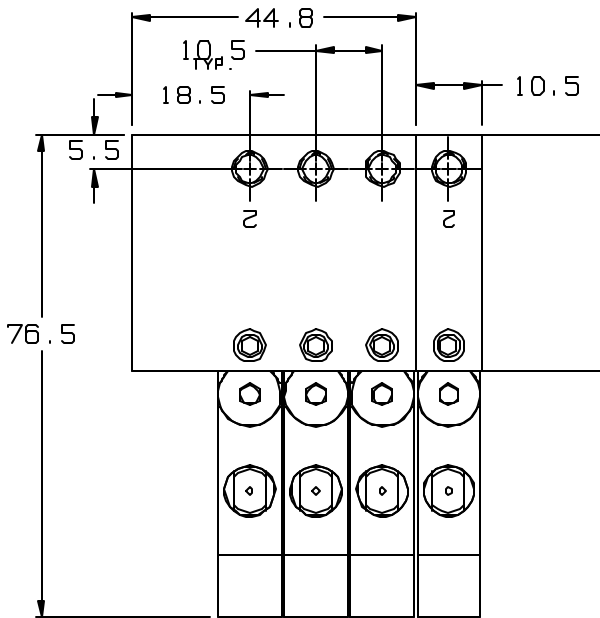
32 SERIES NON PLUG-IN BAR



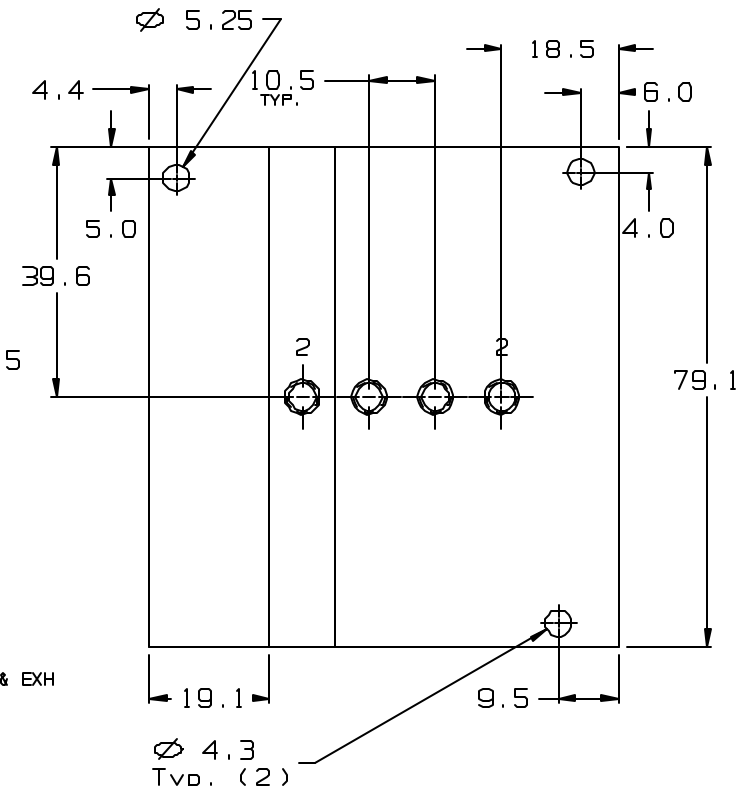
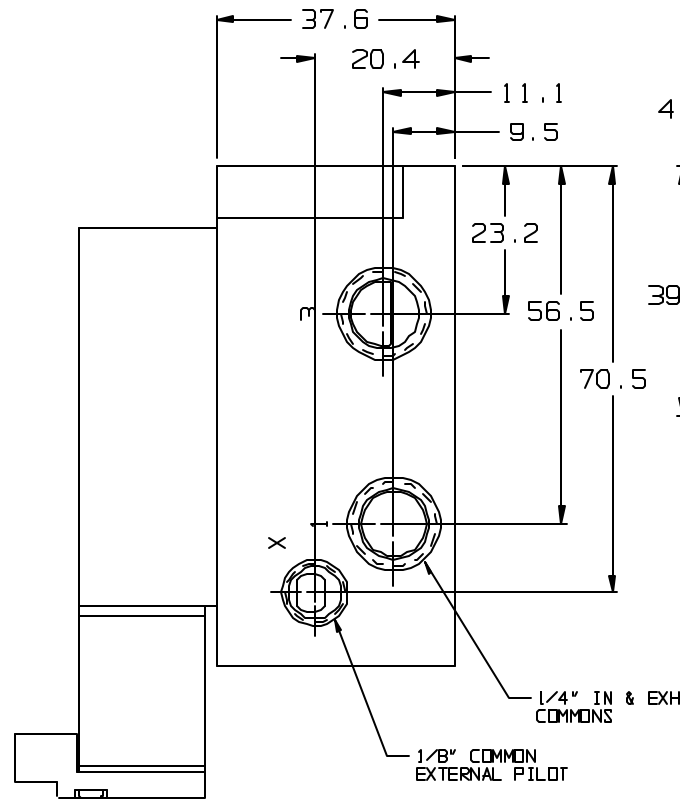
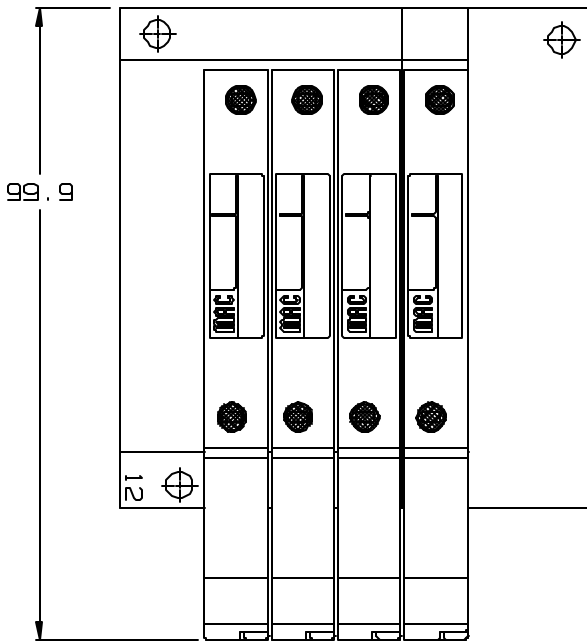
NOTE:
 -ALL DIMENSIONS SHOWN
 ARE IN MILLIMETERS
 -TOLERANCES ON DIMENSIONS ± 0.2
 -SIDE OR BOTTOM PORTS AVAILABLE



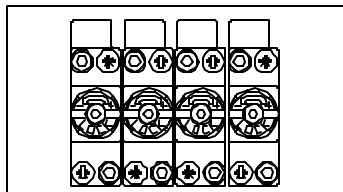
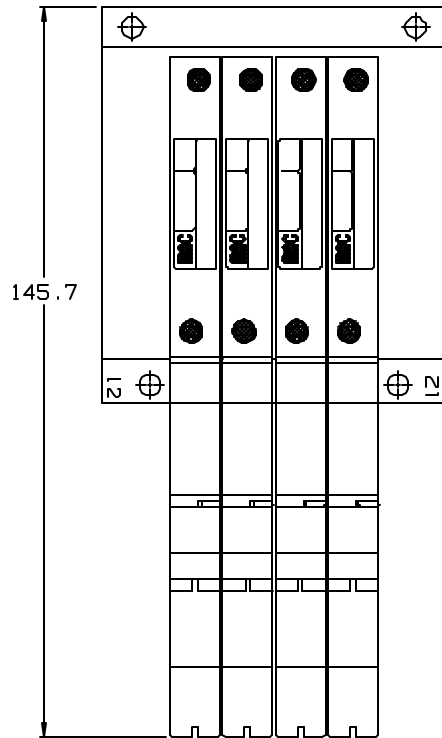
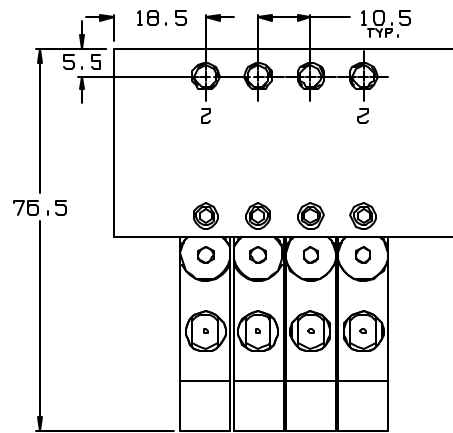
32 SERIES NON PLUG-IN ADD ON BAR



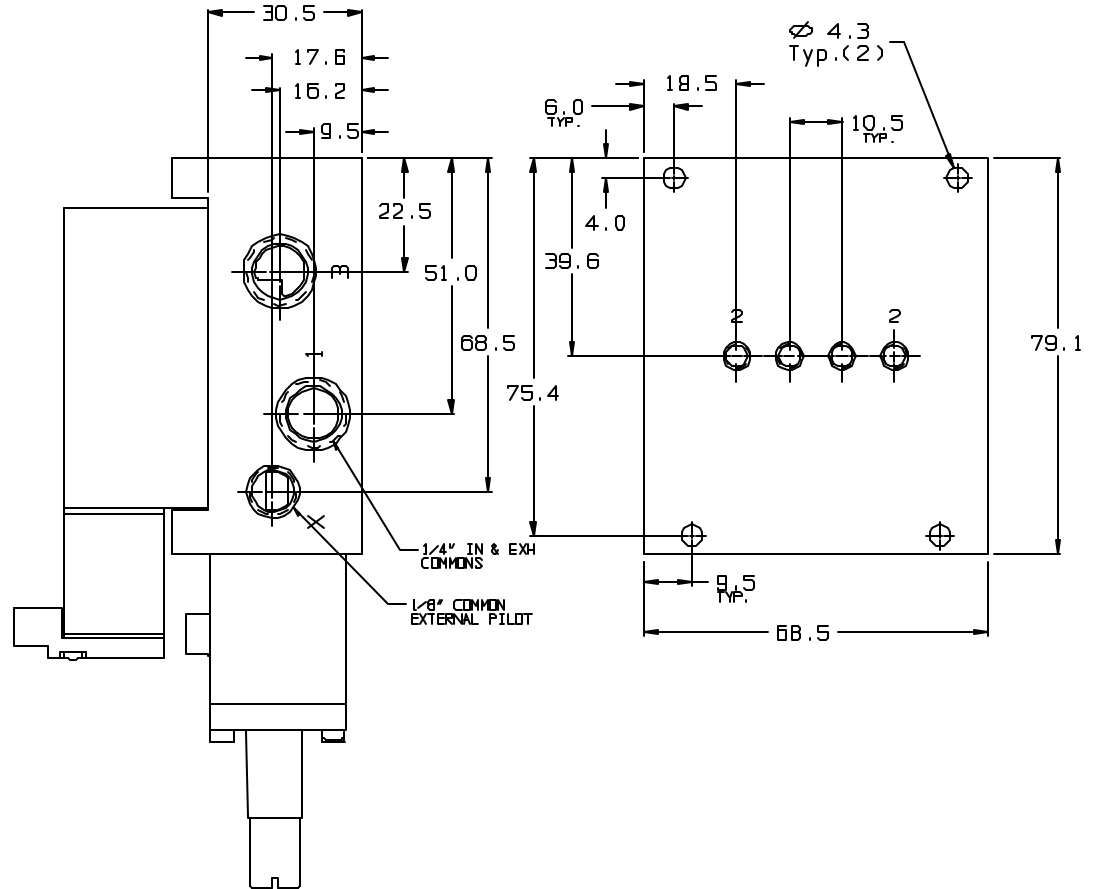
NOTE:
 -ALL DIMENSIONS SHOWN
 ARE IN MILLIMETERS
 -TOLERANCES ON DIMENSIONS ± 0.2
 -SIDE OR BOTTOM PORTS AVAILABLE



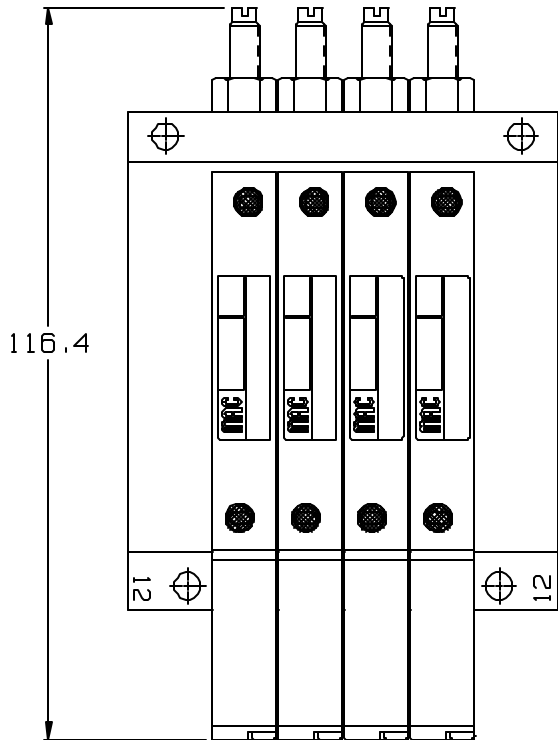
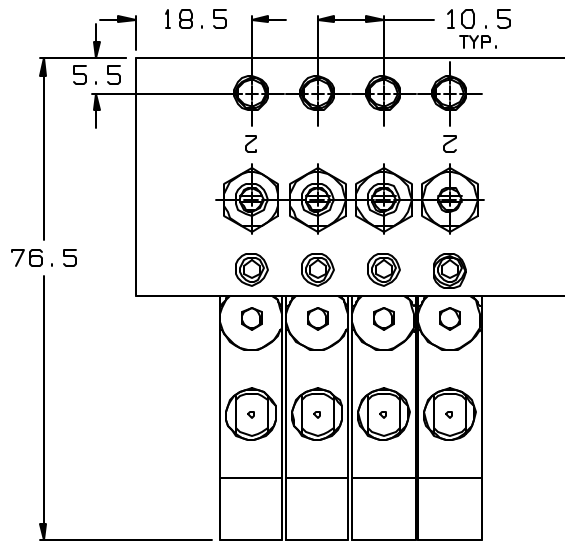
32 SERIES NON PLUG-IN BAR WITH REGULATOR



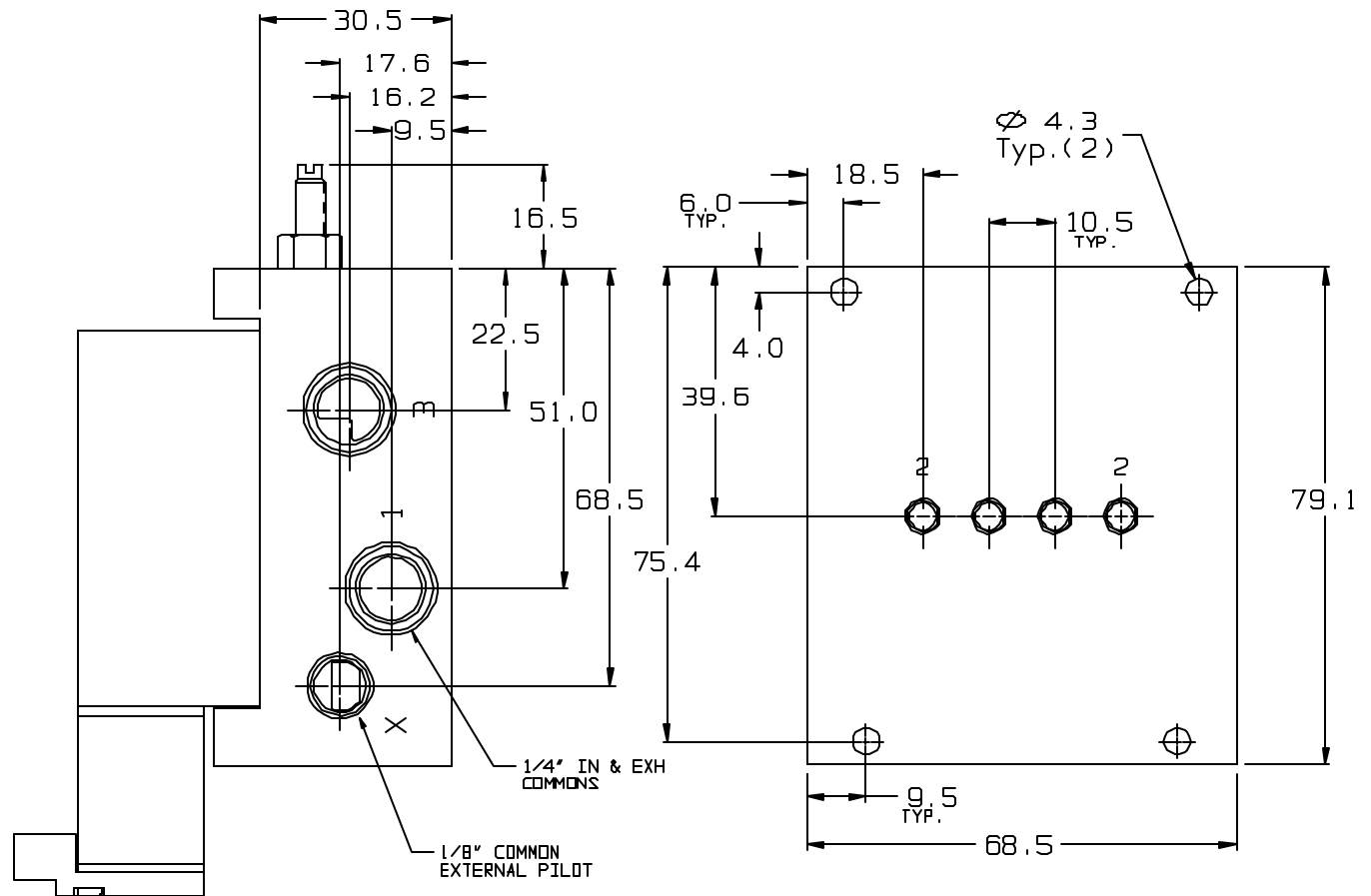
NOTE:
 -ALL DIMENSIONS SHOWN
 ARE IN MILLIMETERS
 -TOLERANCES ON DIMENSIONS ± 0.2
 -SIDE OR BOTTOM PORTS AVAILABLE



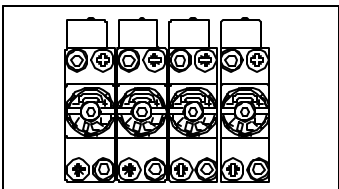
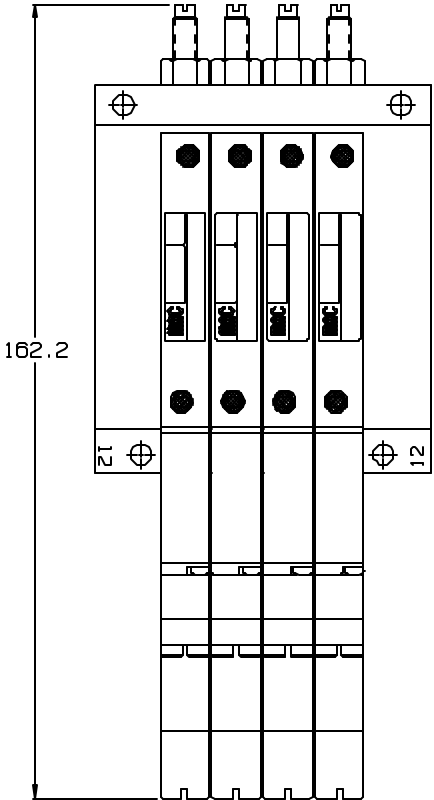
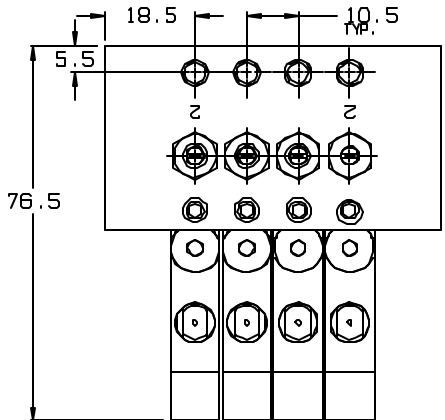
32 SERIES NON PLUG-IN BAR WITH FLOW CONTROL



NOTE:
 -ALL DIMENSIONS SHOWN
 ARE IN MILLIMETERS
 -TOLERANCES IN DIMENSIONS ± 0.2
 -SIDE OR BOTTOM PORTS AVAILABLE



32 SERIES NON PLUG-IN BAR WITH REGULATOR AND FLOW CONTROL



NOTE:
-ALL DIMENSIONS SHOWN
ARE IN MILLIMETERS
-TOLERANCES ON DIMENSIONS ± 0.2
-SIDE OR BOTTOM PORTS AVAILABLE

