

How to Order 32 Series (MACConnect™)

**32A - X X X - X X X - LXXX - X XX (Latching)
GXXX - X XX (Standard)**

Solenoid Assembly

Body Valve Function	Body Pilot Exhaust	Int. or Ext. Pilot	Port Size & Thread Type	Manifold Configuration	MACConnect™ Plug-In Manifold
0 Base Only	0 Base Only	0 Base Only	0 Valve Only	0 Valve Only	0 Valve Only
A 3 Way Normally Closed	M Pilot Exh. Muffled	A Int. Pilot	A #10-32	J Manifold Base Side Port	1 Internal Pilot Plug-In to Left
B 3 Way Normally Open	P Pilot Exh. Piped #10-32	B** Ext. Pilot from Base	B M5 (NPTF Thru Ports)	K Manifold Base Bottom Port	3 Internal Pilot Plug-In to Right
	R Pilot Exh. Piped M5	**Cannot be used w/ "U" body configuration.	D 6mm O.D. Tube Recptacle (NPTF Thru Ports)	L Left End Manifold Base Side Port	5 External Pilot Plug-In to Left
	U* Pilot Exh. Out Main Exh.		E 1/4" O.D. Tube Receptacle (NPTF Thru Ports)	M Left End Manifold Base Bottom Port	7 External Pilot Plug-In to Right
	* Not available w/ Flow Controls		F M7 (NPTF Thru Ports)	N Right End Manifold Base Side Port	
			G M5 (BSPPL Thru Ports)	P Right End Manifold Base Bottom Port	
			J 6mm O.D. Tube Recptacle (BSPPL Thru Ports)		
			K 1/4" O.D. Tube Receptacle (BSPPL Thru Ports)		
			L M7 (BSPPL Thru Ports)		
			M M5 (BSPTR Thru Ports)		
			P 6mm O.D. Tube Recptacle (BSPTR Thru Ports)		
			R 1/4" O.D. Tube Receptacle (BSPTR Thru Ports)		
			S M7 (BSPTR Thru Ports)		

Note: For "G" solenoid use "D" type electrical connector. for "L" solenoid use the "EA" electrical connector.

Parts

- S32001 Normally Closed Spool Assembly
- S32002 Normally Open Spool Assembly

Modifications

- MOD 1727 Nickel Plated Body and/or Base
- MOD 1705 Negative Commons

Note:•Thru ports are 1/4"

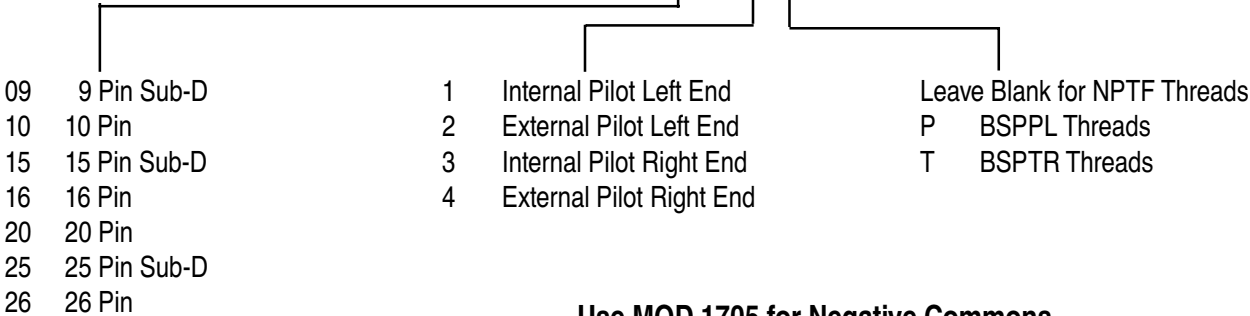
How to Order

Adapter Kits

MAConnect™ Adapter Assembly

(Positive Commons)

M-32001 - XX - X X

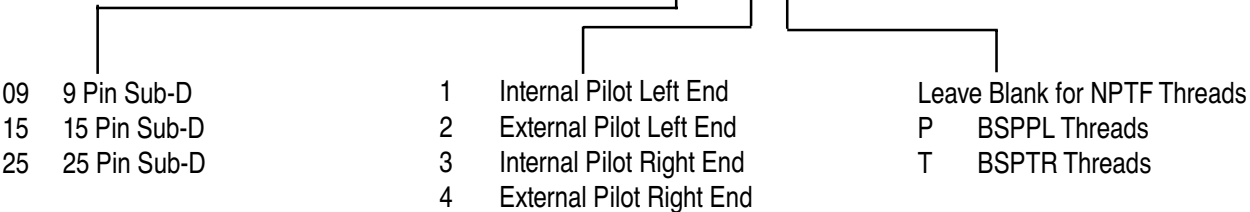


Use MOD 1705 for Negative Commons

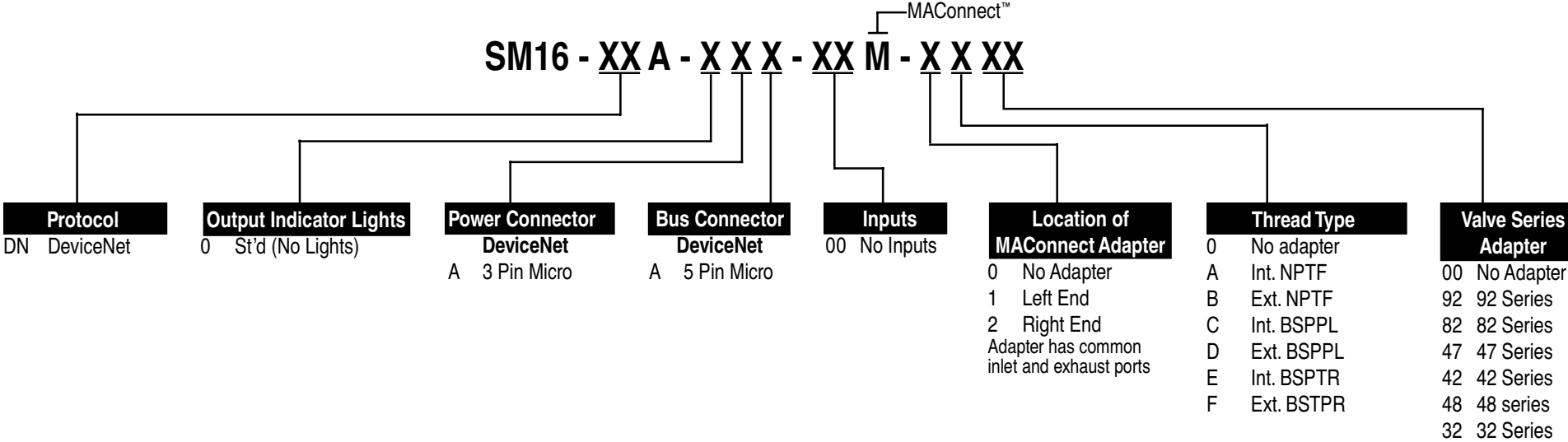
MAConnect™ Adapter Assembly

(Required For Connecting To A Remote Stack)

M-32002 - XX - X X



How to Order SM16 for MAConnect™ Serial Manifold

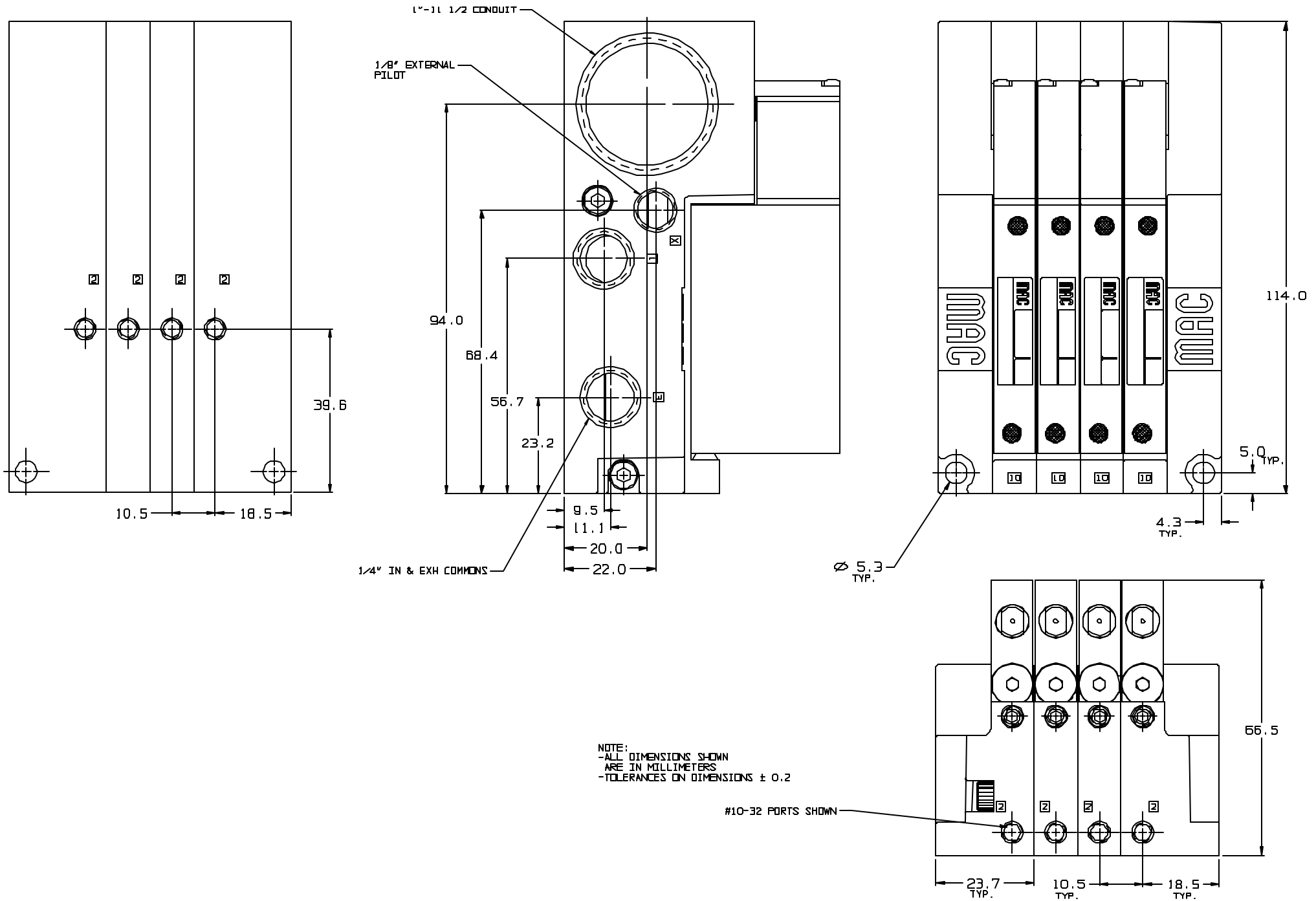


How to Order SM32 for MACConnect™ Serial Manifold

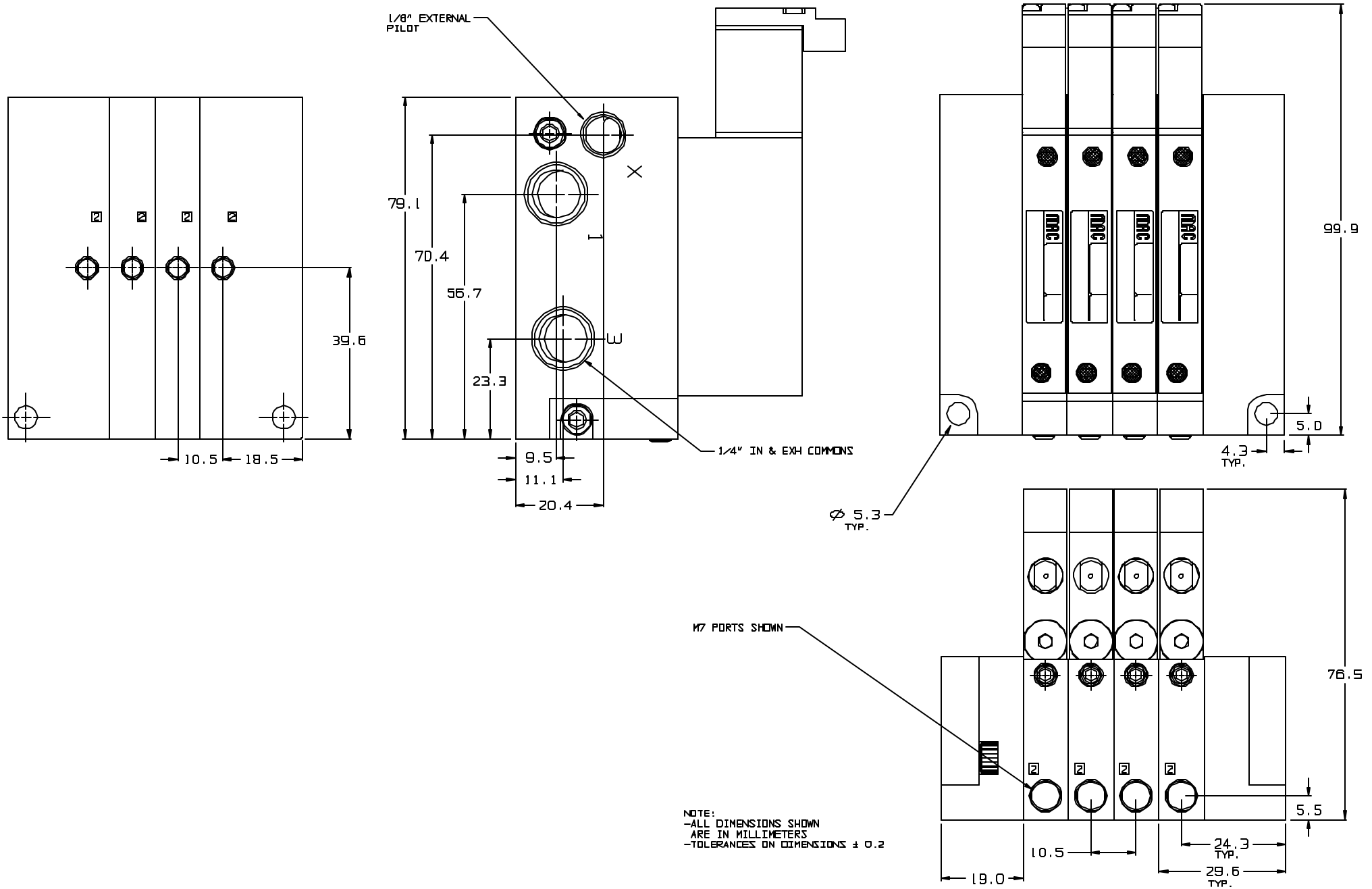
SM32 - XX A - X X X - X X M - X X XX -9

Protocol	Output Indicator Lights	Power Connector	Bus Connector	Inputs	Input Types	Location of MACConnect Adapter	Pilot and Thread Type	Valve Series Adapter
DN DeviceNet	Monitoring Valve Signal	DeviceNet	DeviceNet	A No Inputs	A No Inputs	0 No Adapter	0 No adapter	00 No Adapter
PB Profibus	A St'd (16)	A 3 Pin Mini	A 5 Pin Mini	B 1 Input	B NPN	1 Left End	A Int. NPTF	42 42 Series
IB Interbus-S	Monitoring Bus Logic Signal	B 4 Pin Mini	B 5 Pin Micro	C 2 Inputs	C PNP	2 Right End	B Ext. NPTF	47 47 Series
AB Allen Bradley Remote IO	B St'd (16)	C 3 Pin Micro	C 5 Pin Mini	D 3 Inputs			C Int. BSPPL	48 48 Series
AS AS-I	ASI Available Only w/ (B) Monitoring Signal	D 4 Pin Micro	End Mount	E 4 Inputs			D Ext. BSPPL	82 82 Series
		E 4 Pin Mini Side Mount	2 Conn.	F Tethered			E Int. BSPTR	92 92 Series
		Profibus & Interbus-S	Profibus	16 Inputs			F Ext. BSTPR	** N No Pilot Port
		F 5 Pin Mini	D 9 Pin Sub-D	8 on AS-I			** 82 Series Only	32 32 Series
		H 5 Pin Micro	Interbus-S					
		AB Remote IO	E 9 Pin Sub-D Male & Female					
		G 5 Pole Term.	AB Remote IO					
		B 4 Pin Mini	F 3 Pole Term.					
		AS-I	G 4 Pin Micro (2 4-Pin Connectors)					
		D 4 Pin Micro	AS-I					
			G 4 Pin Micro 2 Conn.					
			H 4 Pin Micro 2 Conn. w/ 2 Prog. Ports					

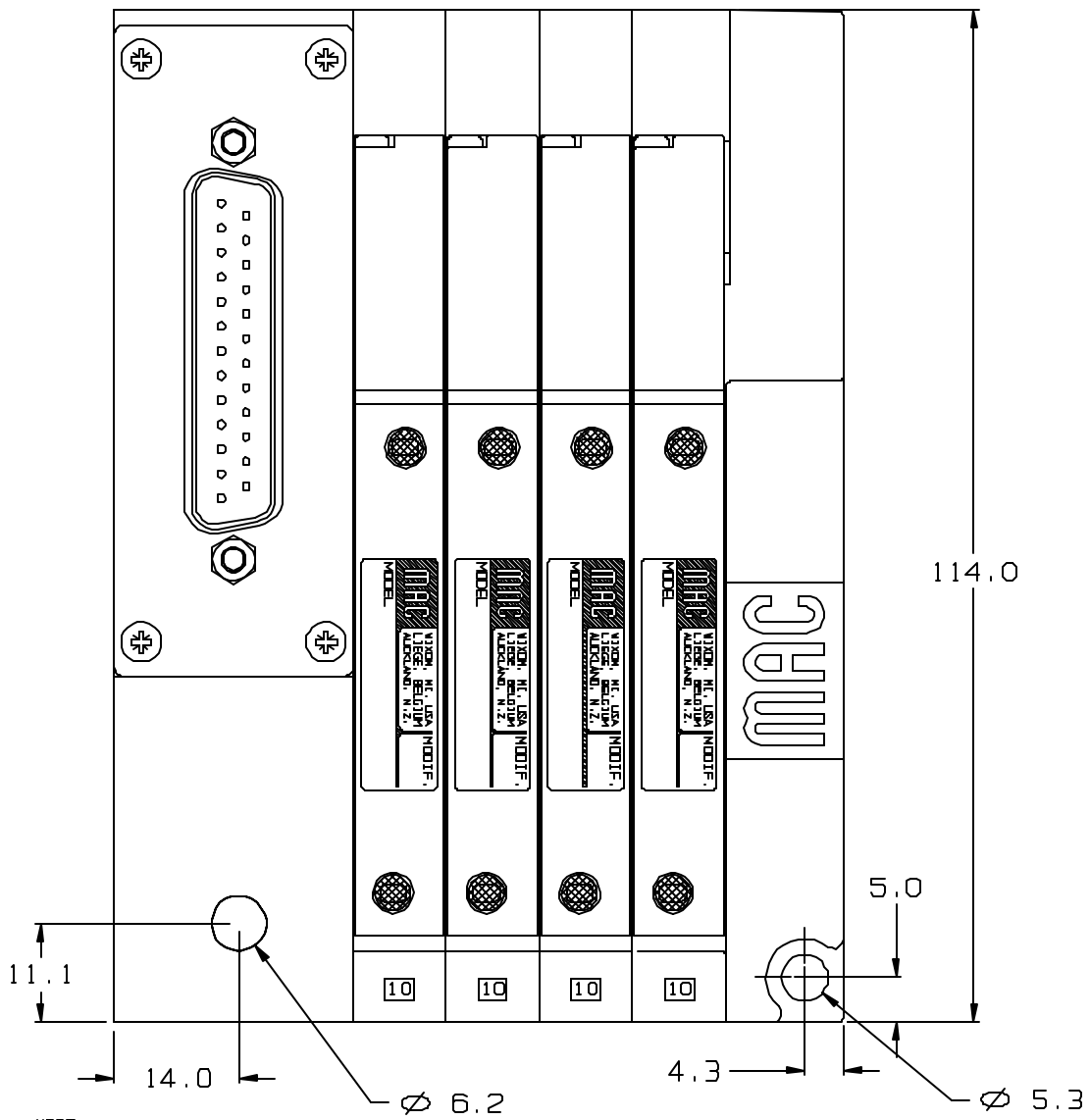
32 SERIES PLUG-IN MANIFOLD



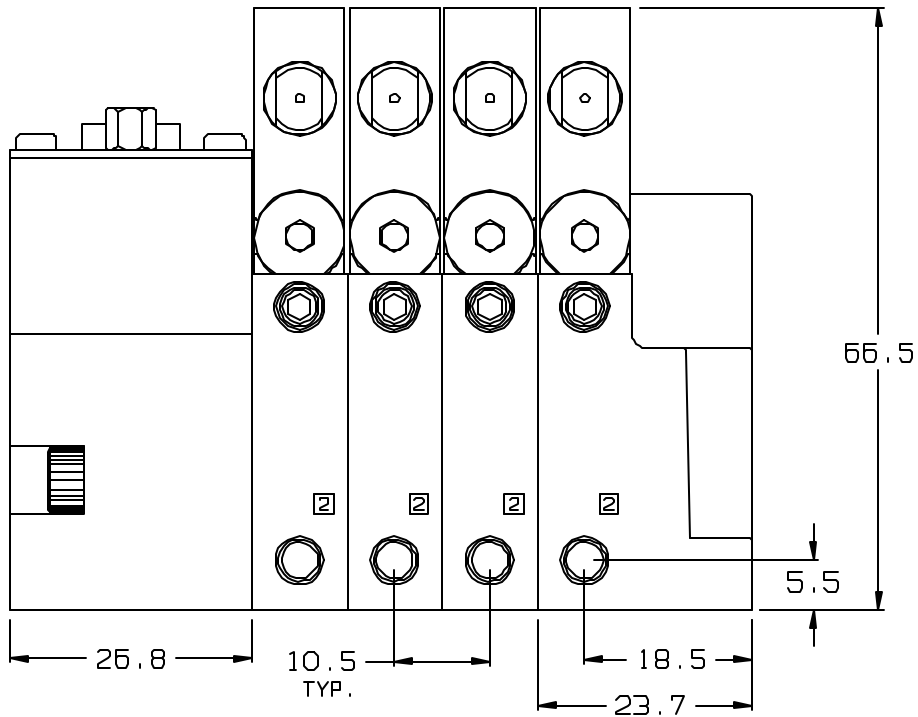
32 SERIES NON PLUG-IN MANIFOLD



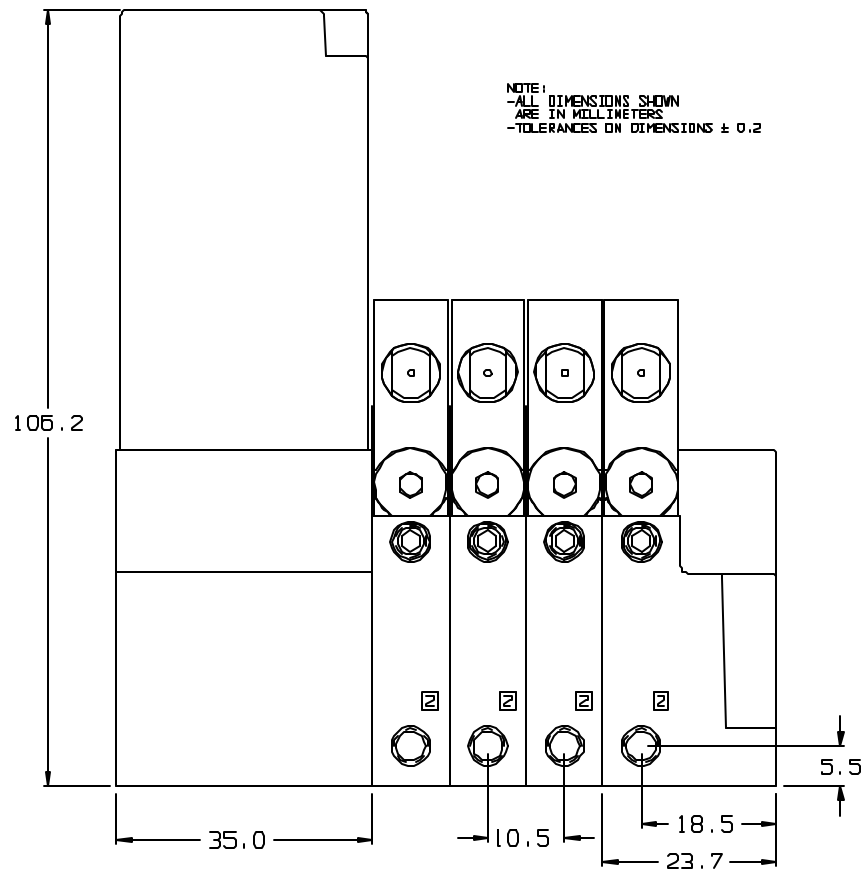
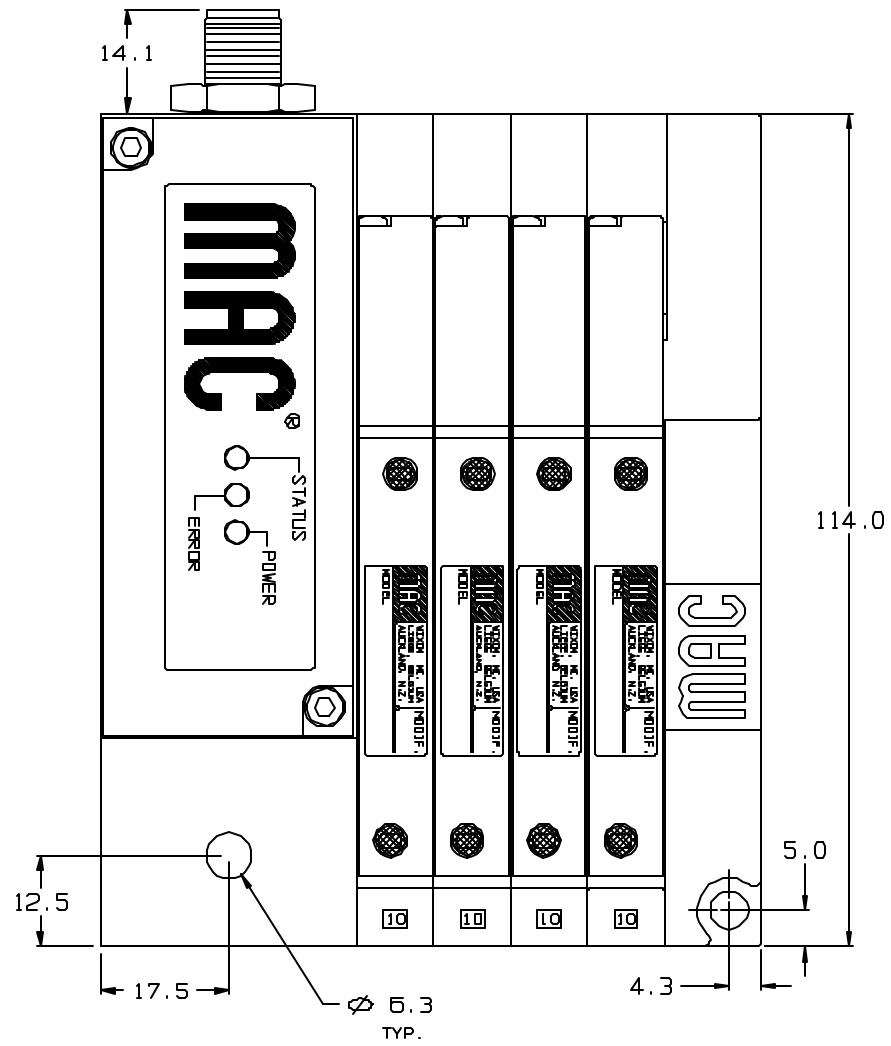
32 SERIES MULTI PIN



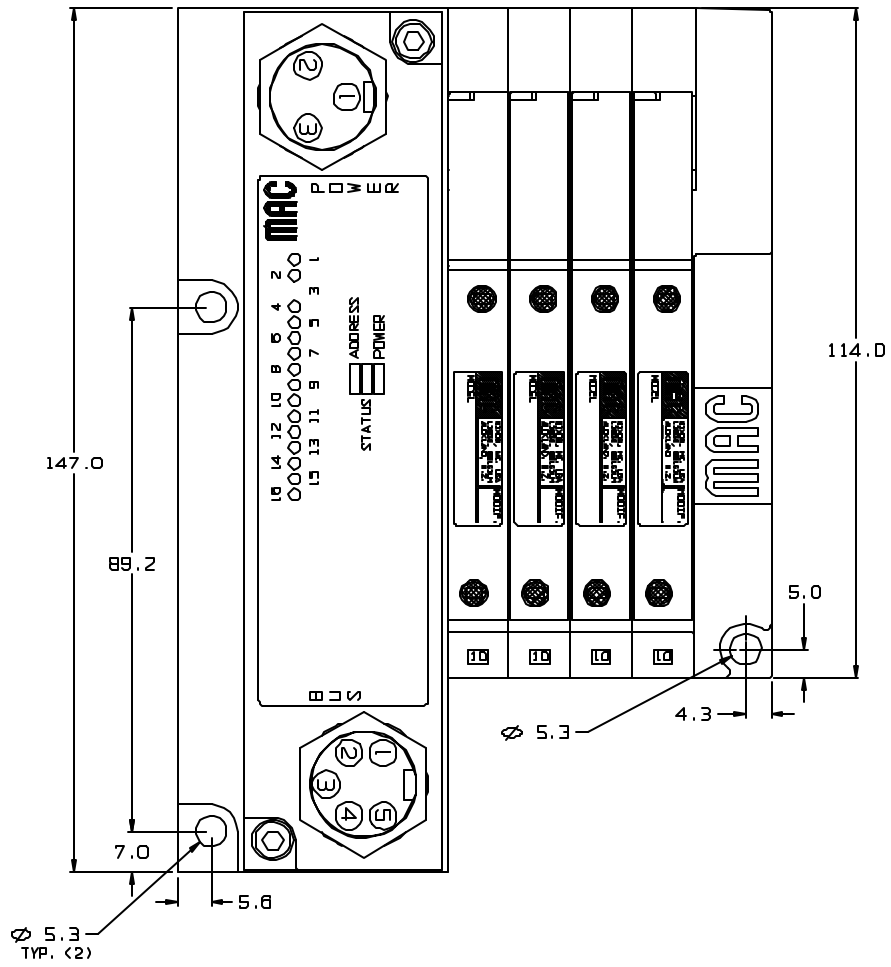
NOTE:
 -ALL DIMENSIONS SHOWN
 ARE IN MILLIMETERS
 -TOLERANCES ON DIMENSIONS ± 0.2



32 SERIES SM16



32 SERIES SM32



NOTE:
 -ALL DIMENSIONS SHOWN
 ARE IN MILLIMETERS
 -TOLERANCES ON DIMENSIONS ± 0.2

