



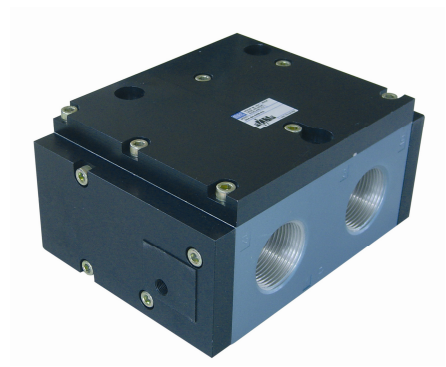
Series 68

## Remote air valves

Function	Port size	Flow [Max]	Individual mounting
<b>3/2, 2/2</b>	<b>1", 1 1/4", 1 1/2"</b>	<b>31.0 C<sub>v</sub></b>	<b>Inline</b>

### OPERATIONAL BENEFITS

1. Balanced spool, immune to variations of pressure, also provides high flow.
2. Bonded spool with minimum friction, shifting in a glass-like finished bore.
3. Wiping effect eliminates sticking
4. Long service life



### HOW TO ORDER

#### SINGLE OPERATOR

Port size	Air spring	Single operator NO Valve	Single operator NC Valve
<b>1" NPTF</b>	Internal	68A-C3-ARA-RA	68A-A3-ARA-RA
<b>1 1/4" NPTF</b>		68A-C3-BRA-RA	68A-A3-BRA-RA
<b>1 1/2" NPTF</b>		68A-C3-CRA-RA	68A-A3-CRA-RA
<b>1" NPTF</b>	External	68A-C3-ARB-RE	68A-A3-ARB-RE
<b>1 1/4" NPTF</b>		68A-C3-BRB-RE	68A-A3-BRB-RE
<b>1 1/2" NPTF</b>		68A-C3-CRB-RE	68A-A3-CRB-RE

#### DOUBLE OPERATOR

Port size	Double operator NO Valve	Double operator NC Valve
<b>1" NPTF</b>	68A-D4-ARB-RA	68A-B4-ARB-RA
<b>1 1/4" NPTF</b>	68A-D4-BRB-RA	68A-B4-BRB-RA
<b>1 1/2" NPTF</b>	68A-D4-CRB-RA	68A-B4-CRB-RA



Series 68

## Remote air valves

### TECHNICAL DATA

<b>Fluid:</b>	Compressed air, vacuum, inert gases
<b>Pressure range:</b>	Vacuum to 120 PSI
<b>Air signal pressure:</b>	20 to 120 PSI (Must be $\geq$ main valve pressure)
<b>Lubrication:</b>	Not required, if used select a medium aniline point lubricant (between 180°F and 210°F)
<b>Filtration:</b>	40 $\mu$
<b>Temperature range:</b>	0°F to 120°F (-18°C to +50°C)
<b>Orifice:</b>	33,4 mm
<b>Flow:</b>	Cv 31.0

### DIMENSIONS

