

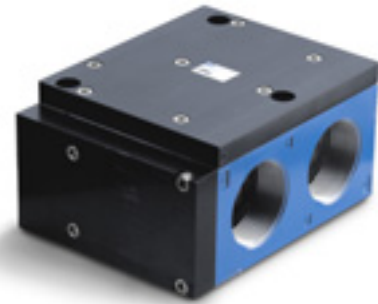


R e m o t e a i r v a l v e s

Function	Port size	Flow [Max]	Individual mounting	Series
3/2 NO-NC, 2/2 NO-NC	1 1/2" - 2" - 2 1/2"	60.0 C_v	Inline	

OPERATIONAL BENEFITS

1. Balanced spool, immune to variations of pressure
2. Bonded spool with minimum friction, shifting in a glass like finished bore
3. Wiping effect eliminates sticking and contamination
4. Long service life



400

67

69

ISO 2

ISO 3

HOW TO ORDER

SINGLE OPERATOR

Port size	Air Spring	Single Operator NO valve	Single Operator NC valve
1 1/2"	Internal	69A-C3-DRA-RA	69A-A3-DRA-RA
2"		69A-C3-ERA-RA	69A-A3-ERA-RA
2 1/2"		69A-C3-FRA-RA	69A-A3-FRA-RA
1 1/2"	External	69A-C3-DRB-RE	69A-A3-DRB-RE
2"		69A-C3-ERB-RE	69A-A3-ERB-RE
2 1/2"		69A-C3-FRB-RE	69A-A3-FRB-RE

DOUBLE OPERATOR

Port size	Double Operator NO valve	Double Operator NC valve
1 1/2"	69A-D4-DRB-RA	69A-B4-DRB-RA
2"	69A-D4-ERB-RA	69A-B4-ERB-RA
2 1/2"	69A-D4-FRB-RA	69A-B4-FRB-RA

TECHNICAL DATA

Fluid :	Compressed air, vacuum, inert gases
Pressure range :	Vacuum to 150 PSI
Air signal pressure :	20 to 150 PSI (must be \geq main valve pressure)
Lubrication :	Not required, if used select a medium aniline point lubricant (between 180°F to 210°F)
Filtration :	40 μ
Temperature range :	0°F to 120°F (-18°C to 50°C)
Flow :	Cv 60.0

DIMENSIONS

Dimensions shown are metric (mm)

