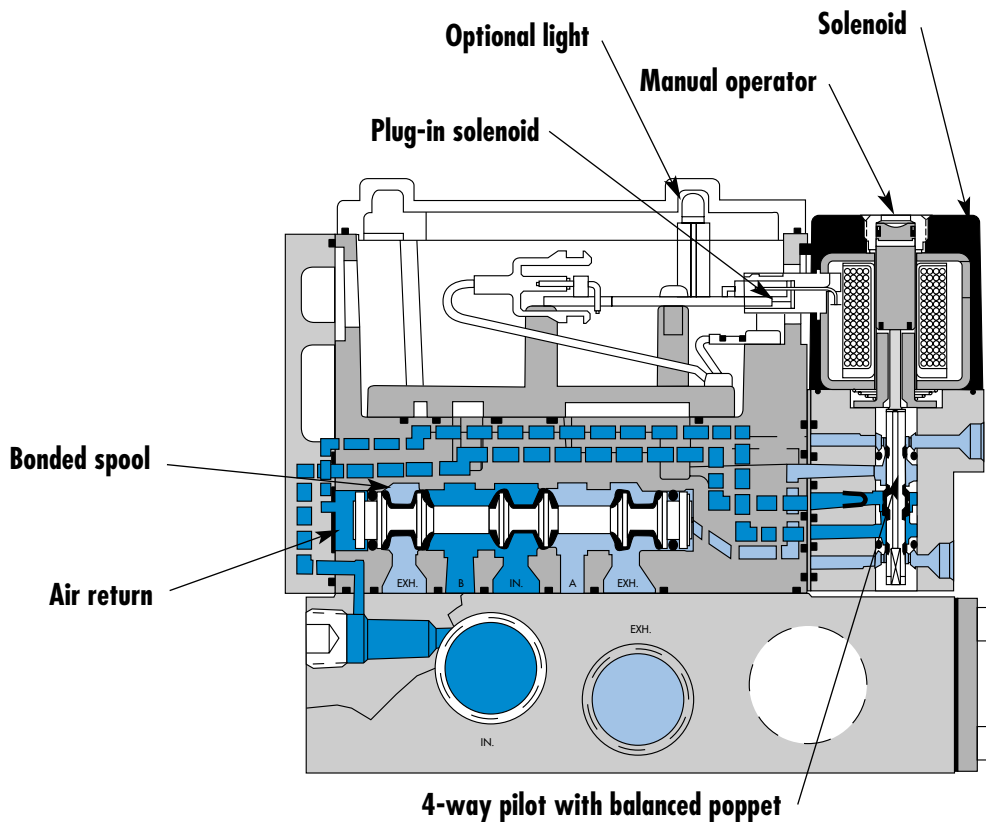


Circuit bar mounting

standard	add-on style	add-a-unit stations for CBM092B
----------	--------------	---------------------------------



**SERIES FEATURES**

- Patented MACSOLENOID<sup>®</sup> for fastest possible response times and virtually burn-out proof AC solenoid operation.
- Optional low watt DC solenoids.
- Optional memory spring.
- Plug-in design of valves and bases for ease of maintenance.
- 2 position or 3 position valve configurations.

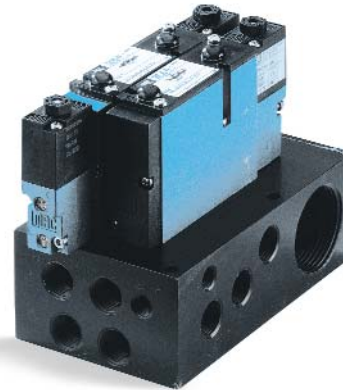
Function	Port size	Flow [Max]	Circuit bar mounting
<b>5/2 - 5/3 - 3/2</b>	<b>1/8 - 1/4 - 3/8</b>	<b>1.0C<sub>v</sub></b>	standard

### OPERATIONAL BENEFITS

1. The 4-way pilot develops maximum shifting forces both ways.
2. Memory spring available.
3. Balanced spool, immune to variations of pressure, also provides high flow.
4. Short stroke with high flow.
5. Bonded seal spool with minimum friction, shifting in a glass-like finished bore.
6. Pilot with balanced poppet, high flow, short and consistent response times.
7. Wiping effect eliminates sticking.
8. Long service life.



**92B-xxx-000-DM-DxxP-xxx**



### HOW TO ORDER VALVE FOR CIRCUIT BAR MOUNTING

#### SINGLE PRESSURE MODELS

Port size (see circuit bar)	5/2 Single operator	5/2 Double operator	5/3 Closed center	5/3 Open center	5/3 Pressure center
Valve less base	<input type="radio"/> 92B-AAA-000-DM-DxxP-xxx	<input type="radio"/> 92B-BAA-000-DM-DxxP-xxx	<input type="radio"/> 92B-EAA-000-DM-DxxP-xxx	<input type="radio"/> 92B-FAA-000-DM-DxxP-xxx	<input type="radio"/> 92B-GAA-000-DM-DxxP-xxx

#### DUAL PRESSURE MODELS (REQUIRES SANDWICH PRESSURE REGULATOR)

Port size (see circuit bar)	5/2 Single operator	5/2 Double operator
Valve less base	<input type="radio"/> 92B-CAA-000-DM-DxxP-xxx	<input type="radio"/> 92B-DAA-000-DM-DxxP-xxx

#### SOLENOID OPERATOR >

**DM-DxxP-xxx**

XX Voltage	X Manual operator	XX Electrical connection
<input type="radio"/> JB 240/60, 220/50	<input type="radio"/> 1 Non-locking	<input type="radio"/> DM Plug-in
<input type="radio"/> JA 120/60, 110/50	<input type="radio"/> 2 Locking	<input type="radio"/> DG Plug-in w/ground
<input type="radio"/> JC 24/60, 24/50	<input type="radio"/> xx Other Options	Note : Ground wire required for solenoids 30 volts and above.
<input type="radio"/> FB 24VDC (1.8 W)		<input type="radio"/> xx Other Options
<input type="radio"/> DA 24VDC (5.4 W)		
<input type="radio"/> DF 24VDC (12.7 W)		
<input type="radio"/> xx Other Options		

**CBM092B-01xxx-AOxx**

Port size	Pilot air	Side cylinder ports (25 mm)	Bottom cylinder ports (25 mm)
<b>1/8 NPTF</b>	Internal	<input type="radio"/> CBM092B-01AAA-A0*xx	<input type="radio"/> CBM092B-01BAA-A0*xx
	Common external	<input type="radio"/> CBM092B-01CAA-A0*xx	<input type="radio"/> CBM092B-01DAA-A0*xx
<b>1/4 NPTF</b>	Internal	<input type="radio"/> CBM092B-01AAD-A0*xx	<input type="radio"/> CBM092B-01BAD-A0*xx
	Common external	<input type="radio"/> CBM092B-01CAD-A0*xx	<input type="radio"/> CBM092B-01DAD-A0*xx
<b>3/8 NPTF</b>	Internal	<input type="radio"/> CBM092B-01AAG-A0*xx	<input type="radio"/> CBM092B-01BAG-A0*xx
	Common external	<input type="radio"/> CBM092B-01CAG-A0*xx	<input type="radio"/> CBM092B-01DAG-A0*xx

Number of stations (03=3 stations)

Note :  clic for valves mounted on base at the factory (add - 9 to the model number).  
for multi-pin connector (9, 15 or 25).

\* If replaced by BO : circuit bar for single operator valves only.

Consult "Precautions" before use, installation or service of MAC Valves.

**OPTIONS**

Sandwich flow controls available, consult factory.

92B-AAA-000-DM-DXXP-1DM

- For lights on valve, replace by B.
- For lights and diode on valve, replace by F.
- For lights and MOV on valve, replace by H.

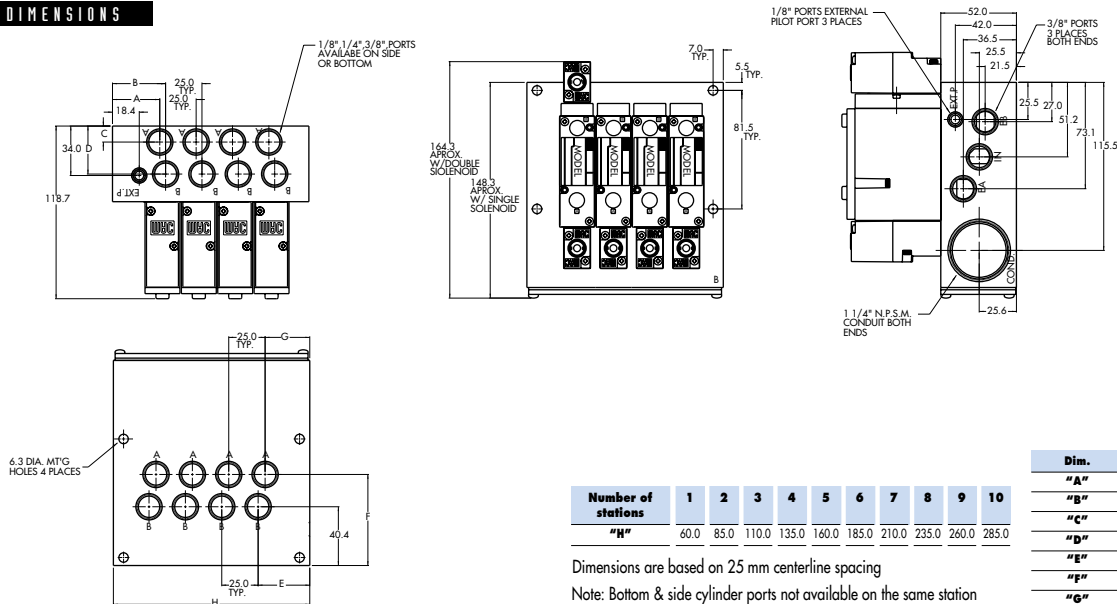
**TECHNICAL  
DATA**

<b>Fluid :</b>	Compressed air, vacuum, inert gases	
<b>Pressure range :</b>	Internal pilot : 20 to 120 PSI	3 positions : 35 to 120 PSI
	External pilot : vacuum to 120 PSI	3 positions : 35 to 120 PSI
<b>Pilot pressure :</b>	20 to 120 PSI      3 positions : 35 to 120 PSI	
<b>Lubrication :</b>	Not required, if used select a medium aniline point lubricant (between 180°F to 210°F)	
<b>Filtration :</b>	40 µ	
<b>Temperature range :</b>	0°F to 120°F (-18°C to +50°C)	
<b>Orifice :</b>	6.2 mm	
<b>Flow (at 6 bar, ΔP=1bar) :</b>	1.0 C <sub>v</sub>	
<b>Coil :</b>	General purpose class A, continuous duty, encapsulated	
<b>Voltage range :</b>	-15% to +10% of nominal voltage	
<b>Protection :</b>	NEMA 4	
<b>Power :</b>	~ Inrush : 7.6 VA	Holding : 4.8 VA
	= 1.8 to 12.7 W	
<b>Response times :</b>	24 V= / 5.4 W	Energize : 8 ms      De-energize : 7 ms
	60Hz / 2.9 W	Energize : 7-13 ms      De-energize : 12-20 ms

Spare parts : • Pilot valve : DMB-DXXP-XXX-1 including mounting screws 35069 (x2) and seal 16544.  
• Pressure seal between valve and base : 16543. • Mounting screws valve to base (x2) : 35050. • Blanking plate : M-92002.

Options : • BSPP threads. • Isolation of inlet and/or exhaust. • Circuit bar for number of stations > 24.

**DIMENSIONS**



Number of stations	1	2	3	4	5	6	7	8	9	10
"H"	60.0	85.0	110.0	135.0	160.0	185.0	210.0	235.0	260.0	285.0

Dimensions are based on 25 mm centerline spacing  
Note: Bottom & side cylinder ports not available on the same station

Dim.	1/8"	1/4"	3/8"
"A"	30.0	30.0	32.5
"B"	39.0	39.0	36.5
"C"	10.0	10.0	11.0
"D"	33.0	33.0	34.0
"E"	40.9	36.9	35.5
"F"	61.1	61.1	62.6
"G"	30.1	30.9	30.7

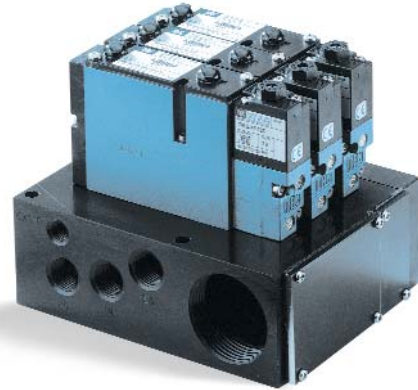
Function	Port size	Flow [Max]	Circuit bar mounting
<b>5/2 - 5/3 - 3/2</b>	<b>1/8 - 1/4 - 3/8</b>	<b>1.0C<sub>v</sub></b>	add-on style

### OPERATIONAL BENEFITS

1. The 4-way pilot develops maximum shifting forces both ways.
2. Memory spring available.
3. Balanced spool, immune to variations of pressure, also provides high flow.
4. Short stroke with high flow.
5. Bonded seal spool with minimum friction, shifting in a glass-like finished bore.
6. Pilot with balanced poppet, high flow, short and consistent response times.
7. Wiping effect eliminates sticking.
8. Long service life.



**92B-xxx-000-DM-DxxP-xxx**



### HOW TO ORDER VALVE FOR CIRCUIT BAR MOUNTING

#### SINGLE PRESSURE MODELS

Port size (see circuit bar)	5/2 Single operator	5/2 Double operator	5/3 Closed center	5/3 Open center	5/3 Pressure center
Valve less base	<input type="radio"/> 92B-AAA-000-DM-DxxP-xxx	<input type="radio"/> 92B-BAA-000-DM-DxxP-xxx	<input type="radio"/> 92B-EAA-000-DM-DxxP-xxx	<input type="radio"/> 92B-FAA-000-DM-DxxP-xxx	<input type="radio"/> 92B-GAA-000-DM-DxxP-xxx

#### DUAL PRESSURE MODELS (REQUIRES SANDWICH PRESSURE REGULATOR)

Port size (see circuit bar)	5/2 Single operator	5/2 Double operator
Valve less base	<input type="radio"/> 92B-CAA-000-DM-DxxP-xxx	<input type="radio"/> 92B-DAA-000-DM-DxxP-xxx

#### SOLENOID OPERATOR >

**DM-DxxP-xxx\***

XX Voltage	X Manual operator	XX Electrical connection
<input type="radio"/> JB 240/60, 220/50	<input type="radio"/> 1 Non-locking	<input type="radio"/> DM Plug-in
<input type="radio"/> JA 120/60, 110/50	<input type="radio"/> 2 Locking	<input type="radio"/> DG Plug-in w/ground
<input type="radio"/> JC 24/60, 24/50	<input type="radio"/> xx Other Options	Note : Ground wire required for solenoids 30 volts and above.
<input type="radio"/> FB 24VDC (1.8 W)		<input type="radio"/> xx Other Options
<input type="radio"/> DA 24VDC (5.4 W)		
<input type="radio"/> DF 24VDC (12.7 W)		
<input type="radio"/> xx Other Options		

**CBM092B-01xxx-AOxx**

Port size	Pilot air	Side cylinder ports (25 mm)	Bottom cylinder ports (25 mm)
<b>1/8 NPTF</b>	Internal	<input type="radio"/> CBM092B-01ABA-A0*xx	<input type="radio"/> CBM092B-01BBA-A0*xx
	Common external	<input type="radio"/> CBM092B-01CBA-A0*xx	<input type="radio"/> CBM092B-01DBA-A0*xx
<b>1/4 NPTF</b>	Internal	<input type="radio"/> CBM092B-01ABD-A0*xx	<input type="radio"/> CBM092B-01BBD-A0*xx
	Common external	<input type="radio"/> CBM092B-01CBD-A0*xx	<input type="radio"/> CBM092B-01DBD-A0*xx
<b>3/8 NPTF</b>	Internal	<input type="radio"/> CBM092B-01ABG-A0*xx	<input type="radio"/> CBM092B-01BBG-A0*xx
	Common external	<input type="radio"/> CBM092B-01CBG-A0*xx	<input type="radio"/> CBM092B-01DBG-A0*xx

Number of stations (03=3 stations)

Note :  clic for valves mounted on base at the factory (add - 9 to the model number).  
for multi-pin connector (9, 15 or 25).

\* If replaced by BO : circuit bar for single operator valves only.

Note : add-a-unit stations may be added to above bars. See page for model numbers

Consult "Precautions" before use, installation or service of MAC Valves.

**OPTIONS**

Sandwich flow controls available, consult factory.

92B-AAA-000-DM-DXXP-1DM

- For lights on valve, replace by B.
- For lights and diode on valve, replace by F.
- For lights and MOV on valve, replace by H.

**TECHNICAL  
DATA**

<b>Fluid :</b>	Compressed air, vacuum, inert gases	
<b>Pressure range :</b>	Internal pilot : 20 to 120 PSI	3 positions : 35 to 120 PSI
	External pilot : vacuum to 120 PSI	3 positions : 35 to 120 PSI
<b>Pilot pressure :</b>	20 to 120 PSI      3 positions : 35 to 120 PSI	
<b>Lubrication :</b>	Not required, if used select a medium aniline point lubricant (between 180°F to 210°F)	
<b>Filtration :</b>	40 µ	
<b>Temperature range :</b>	0°F to 120°F (-18°C to +50°C)	
<b>Orifice :</b>	6.2 mm	
<b>Flow (at 6 bar, ΔP=1bar) :</b>	1.0 C <sub>v</sub>	
<b>Coil :</b>	General purpose class A, continuous duty, encapsulated	
<b>Voltage range :</b>	-15% to +10% of nominal voltage	
<b>Protection :</b>	NEMA 4	
<b>Power :</b>	~ Inrush : 7.6 VA	Holding : 4.8 VA
	= 1.8 to 12.7 W	
<b>Response times :</b>	24 V=5.4 W	Energize : 8 ms      De-energize : 7 ms
	60Hz/2.9 W	Energize : 7-13 ms      De-energize : 12-20 ms

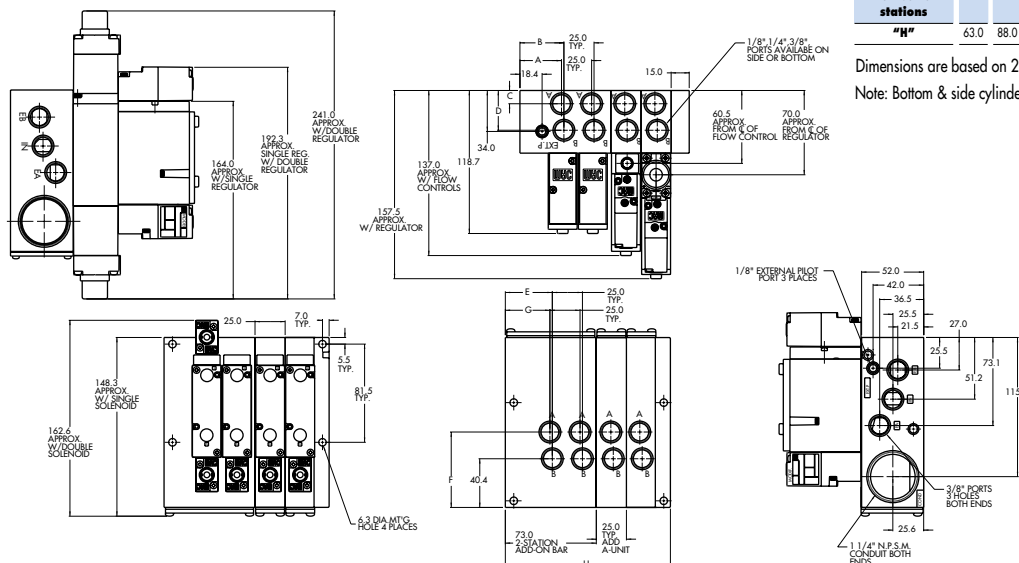
Spare parts :

- Pilot valve : DMB-DXXP-XXX-1 including mounting screws 35069 (x2) and seal 16544.
- Pressure seal between valve and base : 16543. • Mounting screws valve to base (x2) : 35050. • Blanking plate : M-92002.
- End plate kit : M-92001-01 • Isolator disc between add-a-units : 28413.

Options :

- BSPP threads. • Isolation of inlet and/or exhaust. • Circuit bar for number of stations > 24.

**DIMENSIONS**



Number of stations	1	2	3	4	5	6	7	8	9	10
"H"	63.0	88.0	113.0	138.0	163.0	188.0	213.0	238.0	263.0	288.0

Dimensions are based on 25 mm centerline spacing  
Note: Bottom & side cylinder ports not available on the same station

Dim.	1/8"	1/4"	3/8"
"A"	32.0	32.0	34.5
"B"	39.0	39.0	36.5
"C"	10.0	10.0	11.0
"D"	33.4	33.4	33.0
"E"	40.9	37.9	36.5
"F"	61.1	61.1	62.6
"G"	30.1	31.9	34.5

Consult "Precautions" before use, installation or service of MAC Valves.

<b>Function</b>	<b>Port size</b>	<b>Flow [Max]</b>	<b>Circuit bar mounting</b>
<b>5/2 - 5/3 - 3/2</b>	<b>1/8 - 1/4 - 3/8</b>	<b>1.0C<sub>v</sub></b>	add-a-unit stations for CBM092B

### OPERATIONAL BENEFITS

1. The 4-way pilot develops maximum shifting forces both ways.
2. Memory spring available.
3. Balanced spool, immune to variations of pressure, also provides high flow.
4. Short stroke with high flow.
5. Bonded seal spool with minimum friction, shifting in a glass-like finished bore.
6. Pilot with balanced poppet, high flow, short and consistent response times.
7. Wiping effect eliminates sticking.
8. Long service life.



**92B-xxx-000-DM-DxxP-xxx**



### HOW TO ORDER VALVE FOR CIRCUIT BAR MOUNTING

#### SINGLE PRESSURE MODELS

Port size (see circuit bar)	5/2 Single operator	5/2 Double operator	5/3 Closed center	5/3 Open center	5/3 Pressure center
Valve less base	<input type="radio"/> 92B-AAA-000-DM-DxxP-xxx	<input type="radio"/> 92B-BAA-000-DM-DxxP-xxx	<input type="radio"/> 92B-EAA-000-DM-DxxP-xxx	<input type="radio"/> 92B-FAA-000-DM-DxxP-xxx	<input type="radio"/> 92B-GAA-000-DM-DxxP-xxx

#### DUAL PRESSURE MODELS (REQUIRES SANDWICH PRESSURE REGULATOR)

Port size (see circuit bar)	5/2 Single operator	5/2 Double operator
Valve less base	<input type="radio"/> 92B-CAA-000-DM-DxxP-xxx	<input type="radio"/> 92B-DAA-000-DM-DxxP-xxx

#### SOLENOID OPERATOR >

**DM-DxxP-xxx\***

XX Voltage	X Manual operator	XX Electrical connection
<input type="radio"/> JB 240/60, 220/50	<input type="radio"/> 1 Non-locking	<input type="radio"/> DM Plug-in
<input type="radio"/> JA 120/60, 110/50	<input type="radio"/> 2 Locking	<input type="radio"/> DG Plug-in w/ground
<input type="radio"/> JC 24/60, 24/50	<input type="radio"/> xx Other Options	Note : Ground wire required for solenoids 30 volts and above.
<input type="radio"/> FB 24VDC (1.8 W)		<input type="radio"/> xx Other Options
<input type="radio"/> DA 24VDC (5.4 W)		
<input type="radio"/> DF 24VDC (12.7 W)		
<input type="radio"/> xx Other Options		

**CBM092B-01xxx-AOxx**

Port size	Side cylinder ports (25 mm)	Bottom cylinder ports (25 mm)
<b>1/8 NPTF</b>	<input type="radio"/> CBM092B-01ACA-A0*xx	<input type="radio"/> CBM092B-01BCA-A0*xx
<b>1/4 NPTF</b>	<input type="radio"/> CBM092B-01ACD-A0*xx	<input type="radio"/> CBM092B-01BCD-A0*xx
<b>3/8 NPTF</b>	<input type="radio"/> CBM092B-01ACG-A0*xx	<input type="radio"/> CBM092B-01BCG-A0*xx

Number of stations (01=1 stations). Available in one (1) or two (2) station lengths.   
 Note :  clic for valves mounted on base at the factory (add - 9 to the model number).  
 when add-a-units are added to bars with a multi-pin connector, MOD SD03 should be included with add-a-unit model number.

\* If replaced by BO : circuit bar for single operator valves only.

**OPTIONS**

Sandwich flow controls available, consult factory.

92B-AAA-000-DM-DXXP-1DM

- For lights on valve, replace by B.
- For lights and diode on valve, replace by F.
- For lights and MOV on valve, replace by H.

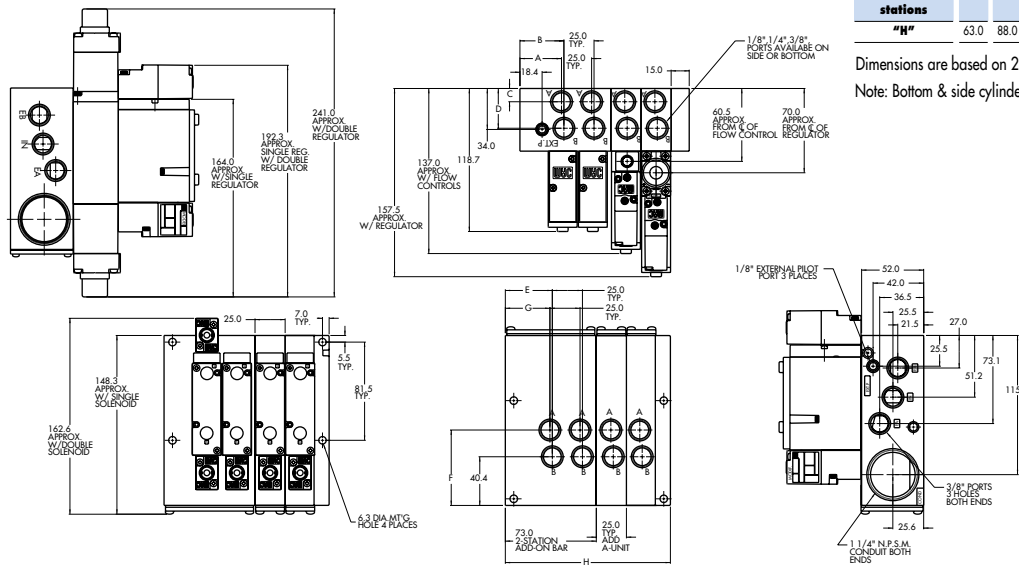
**TECHNICAL  
DATA**

<b>Fluid :</b>	Compressed air, vacuum, inert gases	
<b>Pressure range :</b>	Internal pilot : 20 to 120 PSI	3 positions : 35 to 120 PSI
	External pilot : vacuum to 120 PSI	3 positions : 35 to 120 PSI
<b>Pilot pressure :</b>	20 to 120 PSI      3 positions : 35 to 120 PSI	
<b>Lubrication :</b>	Not required, if used select a medium aniline point lubricant (between 180°F to 210°F)	
<b>Filtration :</b>	40 µ	
<b>Temperature range :</b>	0°F to 120°F (-18°C to +50°C)	
<b>Orifice :</b>	6.2 mm	
<b>Flow (at 6 bar, ΔP=1bar) :</b>	1.0 C <sub>v</sub>	
<b>Coil :</b>	General purpose class A, continuous duty, encapsulated	
<b>Voltage range :</b>	-15% to +10% of nominal voltage	
<b>Protection :</b>	NEMA 4	
<b>Power :</b>	~ Inrush : 7.6 VA	Holding : 4.8 VA
	= 1.8 to 12.7 W	
<b>Response times :</b>	24 V=5.4 W	Energize : 8 ms      De-energize : 7 ms
	60Hz/2.9 W	Energize : 7-13 ms      De-energize : 12-20 ms

Spare parts : • Pilot valve : DMB-DXXP-XXX-1 including mounting screws 35069 (x2) and seal 16544.  
• Pressure seal between valve and base : 16543. • Mounting screws valve to base (x2) : 35050. • Blanking plate : M-92002.

Options : • BSPP threads. • Isolation of inlet and/or exhaust. • Circuit bar for number of stations > 24.

**DIMENSIONS**



Number of stations	1	2	3	4	5	6	7	8	9	10
"H"	63.0	88.0	113.0	138.0	163.0	188.0	213.0	238.0	263.0	288.0

Dimensions are based on 25 mm centerline spacing  
Note: Bottom & side cylinder ports not available on the same station

Dim.	1/8"	1/4"	3/8"
"A"	32.0	32.0	34.5
"B"	39.0	39.0	36.5
"C"	10.0	10.0	11.0
"D"	33.4	33.4	33.0
"E"	40.9	37.9	36.5
"F"	61.1	61.1	62.6
"G"	30.1	31.9	34.5



## Section 2

## Options





0 p t i o n s

---

**Codification table for voltages / Wire length / Manual operator / Electrical connection**

---

VALVE CODE ➤

**DM-DXX X - X XX**  
**1 2 3 4**

**OPTIONS AVAILABLE FOR**

- pilot operated valves 400, 52 & 92 Series

---

**1. VOLTAGE**

- D XX	X - X XX	VOLTAGE
<input type="radio"/>	<b>DB</b>	12 VDC (5.4 W)
<input type="radio"/>	<b>DC</b>	12 VDC (7.5 W)
<input type="radio"/>	<b>DD</b>	24 VDC (7.3 W)
<input type="radio"/>	<b>DE</b>	12 VDC (12.7 W)
<input type="radio"/>	<b>DK</b>	110 VDC (5.8 W)
<input type="radio"/>	<b>DJ</b>	28 VDC (5.7 W)
<input type="radio"/>	<b>DL</b>	64 VDC (6.0 W)
<input type="radio"/>	<b>DM</b>	36 VDC (5.8 W)
<input type="radio"/>	<b>DN</b>	6 VDC (6.0 W)
<input type="radio"/>	<b>DR</b>	90 VDC (6,6 W)
<input type="radio"/>	<b>DS</b>	110 VDC (7.3 W), 100 VDC (6.0 W)
<input type="radio"/>	<b>DT</b>	75 VDC (5.6 W)
<input type="radio"/>	<b>DP</b>	48 VDC (5.8 W)
<input type="radio"/>	<b>FA</b>	12 VDC (1.8 W)
<input type="radio"/>	<b>FE</b>	12 VDC (2.4 W)
<input type="radio"/>	<b>FF</b>	24 VDC (2.4 W)
<input type="radio"/>	<b>JD</b>	100/60, 100/50, 110/60

**2. WIRE LENGTH**

- D XX	X - X XX	WIRE LENGTH
<input type="radio"/>	<b>B</b>	24"
<input type="radio"/>	<b>C</b>	36"
<input type="radio"/>	<b>D</b>	48"
<input type="radio"/>	<b>E</b>	72"
<input type="radio"/>	<b>F</b>	96"



**3. MANUAL OPERATOR**

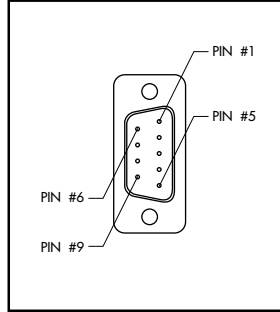
- D XX X - X XX	MANUAL OPERATOR	
<input type="radio"/>	<b>0</b>	No operator
<input checked="" type="radio"/>	<b>1</b>	Non-locking recessed
<input type="radio"/>	<b>2</b>	Locking recessed
<input type="radio"/>	<b>3</b>	Non-locking extended
<input type="radio"/>	<b>4</b>	Locking extended

**4. ELECTRICAL CONNECTION**

- D XX X - X XX	ELECTRICAL CONNECTION	
<input type="radio"/>	<b>BA</b>	Flying leads
<input type="radio"/>	<b>BK</b>	BA with protection diode
<input type="radio"/>	<b>BL</b>	BA with protection varistor
<input checked="" type="radio"/>	<b>CA</b>	1/2" NPS conduit
<input type="radio"/>	<b>JB</b>	Rectangular connector
<input type="radio"/>	<b>JD</b>	Rectangular connector with light
<input type="radio"/>	<b>JM</b>	Rectangular connector, male only
<input type="radio"/>	<b>KA</b>	Square connector
<input type="radio"/>	<b>KB</b>	Square connector with protection diode
<input type="radio"/>	<b>KC</b>	Square connector with protection varistor
<input type="radio"/>	<b>KD</b>	Square connector with light
<input type="radio"/>	<b>KE</b>	Square connector with light and protection diode
<input type="radio"/>	<b>KF</b>	Square connector with light and protection varistor
<input type="radio"/>	<b>KJ</b>	Square connector (male only)
<input type="radio"/>	<b>KK</b>	Square connector with protection diode (male only)
<input type="radio"/>	<b>KL</b>	Square connector with protection varistor (male only)
<input type="radio"/>	<b>TA</b>	Dual tabs
<input type="radio"/>	<b>TB</b>	TA with protection diode
<input type="radio"/>	<b>TD</b>	TA with light
<input type="radio"/>	<b>TE</b>	TA with light and protection diode
<input type="radio"/>	<b>TJ</b>	Dual tabs (male only)
<input type="radio"/>	<b>TK</b>	TJ with protection diode
<input type="radio"/>	<b>TM</b>	TJ with light
<input type="radio"/>	<b>TN</b>	TJ with light and protection diode
<input type="radio"/>	<b>*DN</b>	Plug-in with diode
<input type="radio"/>	<b>*DP</b>	Plug-in with M.O.V.
<input type="radio"/>	<b>*DH</b>	Plug-in with diode & ground
<input type="radio"/>	<b>*DJ</b>	Plug-in with M.O.V & ground

\* These options only apply to the 92 series. All others are for the 400 and 52 series.

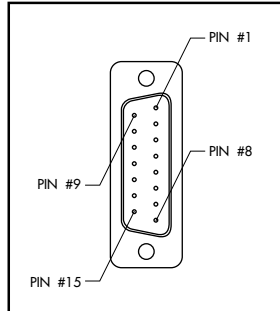
**MOD. S009**



**TECHNICAL DATA**

- Type «SUB\_D»
- Number of contacts : 9
- Solder termination (Dia. 0.6 mm/0.14 mm<sup>2</sup>/26-22 AWG)
- Operating current 5 A/contact
- Rated voltage 125 V~
- Temp. range -40° to +125°C
- Insulation resistance ≥ 5.0<sup>9</sup> Ω
- Protection class IP40 (DIN 40050)
- Number of solenoids : 7 max.
- Max. 24 V=/5.4 W per solenoid
- 2 common wires

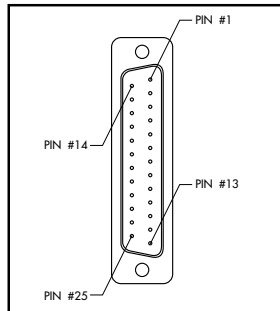
**MOD. S015**



**TECHNICAL DATA**

- Type «SUB\_D»
- Number of contacts : 15
- Solder termination (Dia. 0.6 mm/0.14 mm<sup>2</sup>/26-22 AWG)
- Operating current 5 A/contact
- Rated voltage 125 V~
- Temp. range -40° to +125°C
- Insulation resistance ≥ 5.0<sup>9</sup> Ω
- Protection class IP40 (DIN 40050)
- Number of solenoids : 12 max.
- Max. 24 V=/5.4 W per solenoid
- 3 common wires

**MOD. S025**



**TECHNICAL DATA**

- Type «SUB\_D»
- Number of contacts : 25
- Solder termination (Dia. 0.6 mm/0.14 mm<sup>2</sup>/26-22 AWG)
- Operating current 5 A/contact
- Rated voltage 125 V~
- Temp. range -40° to +125°C
- Insulation resistance ≥ 5.0<sup>9</sup> Ω
- Protection class IP40 (DIN 40050)
- Number of solenoids : 20 max.
- Max. 24 V=/5.4 W per solenoid
- 5 common wires

Note : Use desired MOD. number after circuit bar part number

Connector termination details

