

[®]
MAC

V A L V E S

**THINK GLOBAL
ACT LOCAL**



**KEEPING YOUR MACHINES
RUNNING AROUND THE CLOCK
AROUND THE WORLD**



THINK GLOBAL

ACT LOCAL

NORTH AMERICA

United States

- 1 New England
- 2 Pennsylvania
- 3 Pennsylvania
- 4 Pennsylvania
- 5 New York
- 6 Virginia
- 7 North Carolina
- 8 South Carolina
- 9 Georgia
- 10 Alabama
- 11 Tennessee
- 12 Tennessee
- 13 Tennessee
- 14 Kentucky
- 15 Florida
- 16 Ohio
- 17 Ohio
- 18 Indiana
- 19 Indiana
- 20 Indiana
- 21 Indiana
- 22 Indiana
- 23 Indiana
- 24 Indiana

CENTRAL AMERICA

- 1 Mexico
- 2 Guatemala
- 3 Puerto Rico
- 4 Costa Rica

SOUTH AMERICA

- 5 Brazil
- 6 Chile
- 7 Colombia
- 8 Peru
- 9 Venezuela

- 25 Michigan
- 26 Michigan
- 27 Michigan
- 28 Minnesota
- 29 Illinois
- 30 Missouri
- 31 Wisconsin
- 32 Wisconsin
- 33 Iowa
- 34 Missouri
- 35 Arkansas
- 36 Louisiana
- 37 Louisiana
- 38 Nebraska
- 39 Texas
- 40 Colorado
- 41 Washington
- 42 Utah
- 43 Arizona
- 44 California
- 45 California

Canada
46 Quebec
47 British Columbia
48 British Columbia
49 Alberta
50 Manitoba
51 Ontario
a b c DETROIT 1, 2, 3 MacValves

EUROPE & AFRICA

- 1 Austria
- 2 Belgium
- 3 Czech Republic
- 4 Denmark
- 5 Finland
- 6 France
- 7 Greece
- 8 Hungary
- 9 Germany
- 10 Germany
- 11 Germany
- 12 Germany
- 13 Germany
- 14 Ireland
- 15 Italy
- 16 Netherlands
- 17 Norway
- 18 Spain
- 19 Sweden
- 20 Switzerland
- 21 Turkey
- 22 United Kingdom
- 23 Slovenia
- 24 South Africa
- 25 South Africa
- 26 United Arab Emirates
b LIEGE MacValves

ASIA

- 1 China
- 2 China
- 3 Hong Kong
- 4 Shanghai
- 5 India
- 6 India
- 7 Indonesia
- 8 Indonesia
- 9 Japan
- 10 Korea
- 11 Malaysia
- 12 Philippines
- 13 Singapore
- 14 Sri Lanka
- 15 Taiwan
e TAIWAN MacValves
- 16 Thailand
- 17 Vietnam

OCEANIA

- New Zealand
- 1 Bay of plenty
- 2 Waikato/Taranaki
- 3 Hawkes Bay
- 4 Manawatu
- 5 Wellington
- 6 Otago Southland
- Australia
- 7 New South Wales
- 8 Queensland
- 9 South Australia
- 10 Victoria
- 11 Western Australia
f Auckland MacValves



MAC[®]

VALVES

THINK GLOBAL

FOUR GLOBAL MANUFACTURING PLANTS



ACT LOCAL

MAC Valves, Inc.
World Headquarters
WIXOM, Michigan

MAC Valves Europe, Inc.
LIEGE, Belgium



MAC Valves, Inc.
DUNDEE, Michigan

MAC Valves Pacific, Inc.
AUCKLAND, New Zealand

VERTICALLY INTEGRATED MANUFACTURING

- TOTAL CONTROL OF KEY COMPONENTS
- STATE OF THE ART EQUIPMENT



ACT LOCAL

In house coil winding, molding



In house rubber compounding and grinding



In house bore machining, burnishing, polishing



In house circuit bar machining



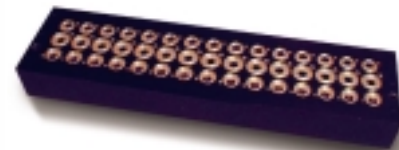
Coils meeting any customer specifications



High precision self lubricating bonded seal spools

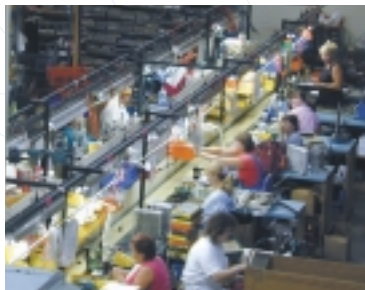


High precision mirror finish valve bores



Bar manifolds with integrated pneumatic circuits

Assembly lines



Test cells



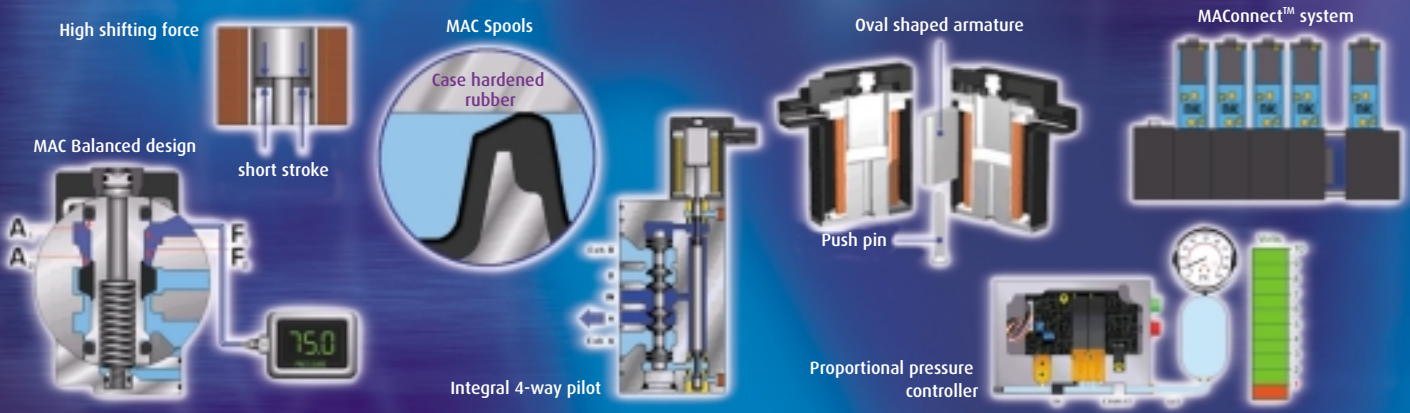
100%
OF
PRODUCTION
TESTED
100%

INNOVATIVE DESIGN VALVES THAT DON'T STICK

80 GLOBAL PATENTS

PATENT #5,526,838 - JUNE 1996 PATENT #5,192,936 - MARCH 1993
 PATENT #4,574,844 - MARCH 1986 PATENT #4,491,152 - JANUARY 1985
 PATENT #2,739,274 - MARCH 1956 PATENT #5,499,647 - MARCH 1996
 PATENT #6,192,937 - FEBRUARY 2001 PATENT #5,032,704 - JULY 1991
 PATENT #3,012,578 - DECEMBER 1961 PATENT #4,177,840 - DECEMBER 1979 PATENT #4,574,844
 PATENT #3, PATENT # 4,271,868 - JUNE 1981 PATENT #6,129,115 - OCTOBER 2000
 PATENT #6,095,384 - AUGUST 2000

INNOVATIVE DESIGN FEATURES



BENEFITS

- **HIGH SHIFTING FORCES**
- **PRECISE REPEATABILITY**
- **HIGH FLOW**
- **WIPING ACTION**
- **FAST RESPONSE**
- **SMALL PACKAGES**
- **NON STICKING**
- **LONG LIFE**
- **MODULARITY**

©
MAC

V A L V E S

THINK GLOBAL



ACT LOCAL

MAC DISTRIBUTORS NETWORK

- 30 years experience
- Local support
- Globally linked network
- Special solutions
- Global customer partnership



○ *45 countries*

○ *3500 employees*

○ *200 service centers*

○ *\$ 50 million inventory*

○ *1000 factory certified application specialists*

YOUR MDN PARTNER

- LOCAL SUPPORT
- PROBLEM SOLVING
- COST EFFECTIVE SOLUTIONS



ACT LOCAL

- Customized solutions
- CAD drawings
- Engineering support

DESIGN

- \$ 50 million
- Customer specific
- Global availability

INVENTORY



SERVICE

- 24 hours
- 7 days/week
- Factory certified technicians

DIAGNOSTIC

- Troubleshooting
- Machine optimization
- Computerized machine analysis

YOUR MDN PARTNER

- LOCAL SUPPORT
- PROBLEM SOLVING
- COST EFFECTIVE SOLUTIONS



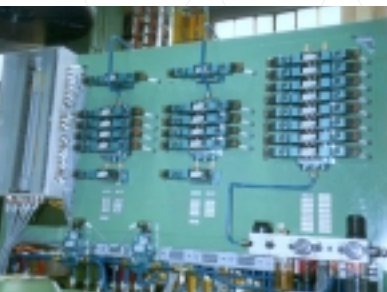
ACT LOCAL

- Panels
- Pneumatic sub-assemblies

ADDED VALUE

- Design assistance
- Machine optimization
- Startup assistance

OEM SUPPORT



TRAINING

- Local training
- Customer specific training
- Video and data conferencing

CUSTOMIZED SOLUTIONS

- Industry specific
- Customer specific

MAC[®]

VALVES

THINK GLOBAL

MAC[®] & MDN OFFER INNOVATIVE SOLUTIONS FOR ALL TYPES OF APPLICATIONS

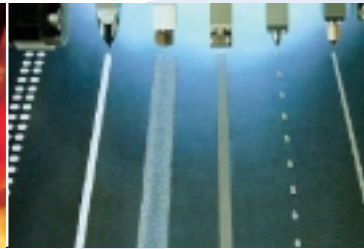


ACT LOCAL

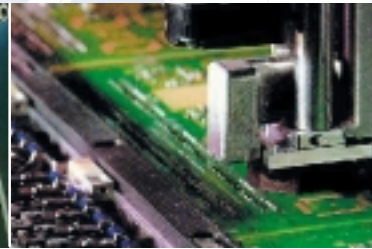
SOME EXAMPLES



GLASS



PACKAGING



SEMI CONDUCTOR



TIRE



WELDING



HEALTHCARE



TRANSPORTATION



ALUMINIUM



WOOD

KEEPING YOUR MACHINES RUNNING AROUND THE CLOCK AROUND THE WORLD



MAC VALVES, INC.
P.O. BOX 111
30569 BECK ROAD
WIXOM, MI 48393-7011

TEL: 1-800-MAC VLVS
TEL: 1 (248) 624-7700
FAX: 1 (248) 624-0549
E-mail: Mac@macvalves.com
Web Site: www.macvalves.com

MAC VALVES EUROPE, INC.
RUE MARIE CURIE, 12
B-4431 ANS (LIEGE)
BELGIUM

TEL: 32 (4) 239 68 68
FAX: 32 (4) 263 19 42
E-mail: Info@macvalves.be

MAC VALVES PACIFIC, INC.
P.O. BOX 12221
PENROSE, AUCKLAND
NEW ZEALAND

TEL: 64 (9) 634-9400
FAX: 64 (9) 634-9401
E-mail: Macvalves@xtra.co.nz

MAC VALVES, INC.
5275 ANN ARBOR ROAD
DUNDEE, MICHIGAN (MI) 48131
U.S.A.

TEL: 1 (743) 529-5099
FAX: 1 (743) 529-5902