

Sandwich pressure regulator with manual adjust knob.

OPERATIONAL BENEFITS

1. Easy mounting : saves on installation costs in comparison with inline regulators.
2. Allows to have compact, all-included units.
3. Large orifice provides high flow.
4. Various functions available.
5. Simple, reliable and solid design.



PR82A
PR63D
PR65C

HOW TO ORDER

INTERNAL PILOT REGULATORS

Gauges	Single pressure Regulator A end Same regulated pressure to ports A and B	Single pressure Regulator B end Same regulated pressure to ports A and B	Dual pressure Regulator A end Regulated pressure to port A *	Dual pressure Regulator B end Regulated pressure to port B *	Dual pressure Dual regulator Two regulated pressures to ports A and B *
No gauge	PR125A-GCAA	PR125A-GAAA	PR125A-GDAA	PR125A-GBAA	PR125A-GEAA
Gauge parallel to regulator(s)	PR125A-GCDA	PR125A-GADA	PR125A-GDDA	PR125A-GBDA	PR125A-GEEA
Gauge perpendicular to regulator(s)	PR125A-GCBA	PR125A-GABA	PR125A-GDBA	PR125A-GBBA	PR125A-GECA

PRA1A
PRA2D
PRA3C

EXTERNAL PILOT REGULATORS

Gauges	Single pressure Regulator A end Same regulated pressure to ports A and B	Single pressure Regulator B end Same regulated pressure to ports A and B	Dual pressure Regulator A end Regulated pressure to port A *	Dual pressure Regulator B end Regulated pressure to port B *	Dual pressure Dual regulator Two regulated pressures to ports A and B *
No gauge	PR125A-HCAA	PR125A-HAAA	PR125A-HDAA	PR125A-HBAA	PR125A-HEAA
Gauge parallel to regulator(s)	PR125A-HCDA	PR125A-HADA	PR125A-HDDA	PR125A-HBDA	PR125A-HEEA
Gauge perpendicular to regulator(s)	PR125A-HCBA	PR125A-HABA	PR125A-HDBA	PR125A-HBBA	PR125A-HECA

* - To be used with dual pressure valves.

Valve code is : MAC125A-VXX4-PM-XXYZZ (valves must be external pilot models for either single or dual pressure valves)

Note : regulating range for above models is 0-120 PSI. For other ranges see technical data page. Photo shown with slotted stem.

ADJUSTMENT OPTIONS

PR125A-xxxx

- Replace by A for internal pilot with slotted stem
- Replace by B for external pilot with slotted stem
- Replace by K for internal pilot with locking slotted stem
- Replace by L for external pilot with locking slotted stem

PR125A
PR250B

TECHNICAL DATA

Fluid :	Compressed air, inert gases
Pressure range :	0 to 150 PSI
Regulating range :	0 to 120 PSI (other ranges see below)
Lubrication :	Not required, if used select a medium aniline point lubricant (between 180°F to 210°F)
Filtration :	40 μ
Temperature range :	0°F to 120°F (-18°C to 50°C)
Flow :	(1.8 C _v)

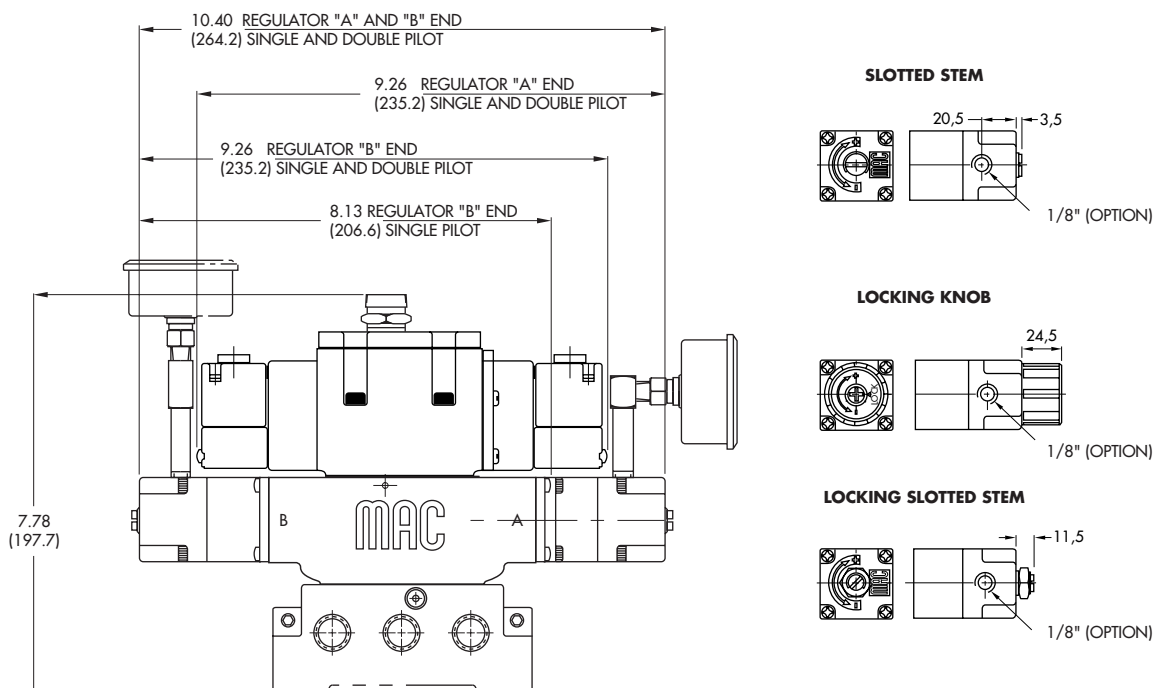
- Spare parts :
- Pressure regulator (less sandwich block) : PR125A-JOAA (KNOB), PR125A-COAA (SLOTTED STEM), PR125A-MOAA (LOCKING SLOTTED STEM).
 - Gauges : N-82016-01 (0-120 PSI perpendicular)
 N-82016-02 (0-120 PSI parallel)
 N-82016-03 (0-80 PSI perpendicular)
 N-82016-04 (0-80 PSI parallel)
 N-82016-05 (0-30 PSI perpendicular)
 N-82016-06 (0-30 PSI parallel)

Regulating range options : PR125A-XXXX

- Replace by B - 0 to 80 PSI
- Replace by C - 0 to 30 PSI
- Replace by D - 0 to 120 PSI on "A" end
 - 0 to 80 PSI on "B" end
- Replace by E - 0 to 120 PSI on "B" end
 - 0 to 80 PSI on "A" end
- Replace by F - 0 to 120 PSI on "A" end
 - 0 to 30 PSI on "B" end
- Replace by G - 0 to 120 PSI on "B" end
 - 0 to 30 PSI on "A" end
- Replace by H - 0 to 80 PSI on "A" end
 - 0 to 30 PSI on "B" end
- Replace by J - 0 to 80 PSI on "B" end
 - 0 to 30 PSI on "A" end

DIMENSIONS

Dimensions shown are metric (mm)



Sandwich pressure regulator with air pilot adjust.

OPERATIONAL BENEFITS

1. Easy mounting : saves on installation costs in comparison with inline regulators.
2. Allows to have compact, all-included units.
3. Large orifice provides high flow.
4. Various functions available.
5. Simple, reliable and solid design.



PR82A
PR63D
PR65C

HOW TO ORDER

INTERNAL PILOT REGULATORS

Gauges	Single pressure Regulator A end Same regulated pressure to ports A and B	Single pressure Regulator B end Same regulated pressure to ports A and B	Dual pressure Regulator A end Regulated pressure to port A *	Dual pressure Regulator B end Regulated pressure to port B *	Dual pressure Dual regulator Two regulated pressures to ports A and B *
No gauge	PR125A-DCAA	PR125A-DAAA	PR125A-DDAA	PR125A-DBAA	PR125A-DEAA
Gauge parallel to regulator(s)	PR125A-DCDA	PR125A-DADA	PR125A-DDDA	PR125A-DBDA	PR125A-DEEA
Gauge perpendicular to regulator(s)	PR125A-DCBA	PR125A-DABA	PR125A-DDBA	PR125A-DBBA	PR125A-DECA

PRA1A
PRA2D
PRA3C

EXTERNAL PILOT REGULATORS

Gauges	Single pressure Regulator A end Same regulated pressure to ports A and B	Single pressure Regulator B end Same regulated pressure to ports A and B	Dual pressure Regulator A end Regulated pressure to port A *	Dual pressure Regulator B end Regulated pressure to port B *	Dual pressure Dual regulator Two regulated pressures to ports A and B *
No gauge	PR125A-ECAA	PR125A-EAAA	PR125A-EDAA	PR125A-EBAA	PR125A-EEAA
Gauge parallel to regulator(s)	PR125A-ECDA	PR125A-EADA	PR125A-EDDA	PR125A-EBDA	PR125A-EEEA
Gauge perpendicular to regulator(s)	PR125A-ECBA	PR125A-EABA	PR125A-EDBA	PR125A-EBBA	PR125A-EECA

* - To be used with dual pressure valves.

Valve code is : MAC125A-VXX4-PM-XXYYZ (valves must be external pilot models for either single or dual pressure valves)

PR125A
PR250B

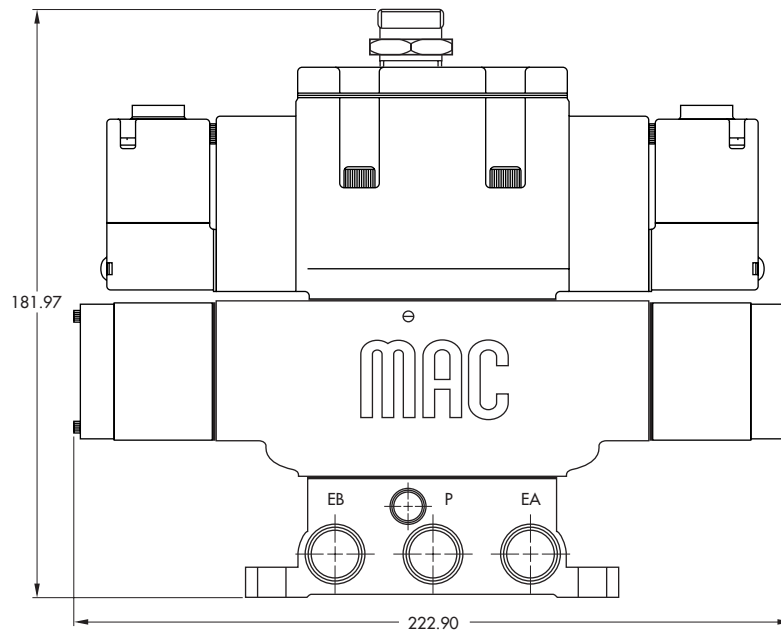
TECHNICAL DATA

Fluid :	Compressed air, inert gases
Pressure range :	0 to 150 PSI
Regulating range :	0 to 120 PSI
Lubrication :	Not required, if used select a medium aniline point lubricant (between 180°F to 210°F)
Filtration :	40 μ
Temperature range :	0°F to 120°F (-18°C to 50°C)
Flow :	(1.8 C _v)

- Spare parts :
- Pressure regulator (less sandwich block) : PR125A-FOAA
 - Gauges : N-82016-01 (0-120 PSI perpendicular)
N-82016-02 (0-120 PSI parallel)

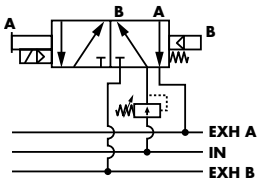
DIMENSIONS

Dimensions shown are metric (mm)



Manual adjust

Single regulator
Single pressure

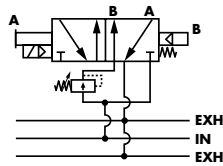


P. 305

P. 309

P. 313

Single regulator
Dual pressure

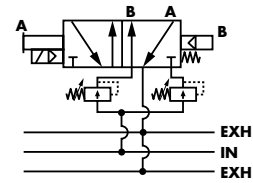


P. 305

P. 309

P. 313

Dual regulator
Dual pressure

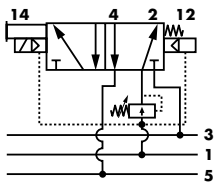


P. 305

P. 309

P. 313

Single regulator
Single pressure

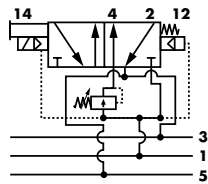


P. 317

P. 321

P. 325

Single regulator
Dual pressure

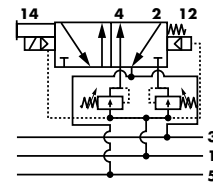


P. 317

P. 321

P. 325

Dual regulator
Dual pressure

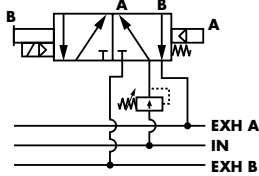


P. 317

P. 321

P. 325

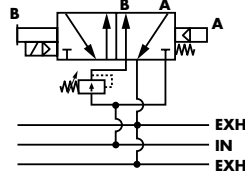
Single regulator
Single pressure



P. 329

P. 333

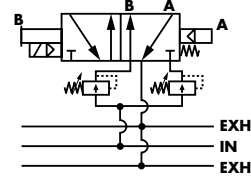
Single regulator
Dual pressure



P. 329

P. 333

Dual regulator
Dual pressure



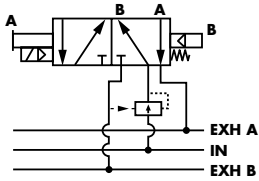
P. 329

P. 333

Air adjust

Series

Single regulator
Single pressure

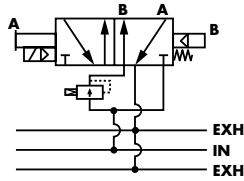


P. 307

P. 311

P. 315

Single regulator
Dual pressure

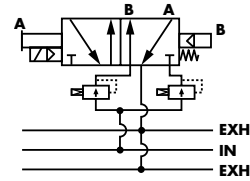


P. 307

P. 311

P. 315

Dual regulator
Dual pressure



P. 307

P. 311

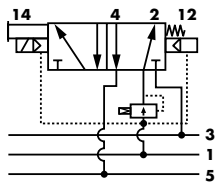
P. 315

PR82A

PR63D

PR65C

Single regulator
Single pressure

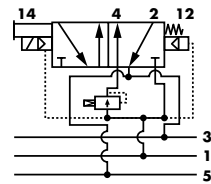


P. 319

P. 323

P. 327

Single regulator
Dual pressure

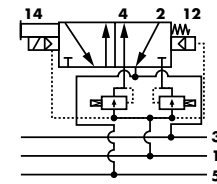


P. 319

P. 323

P. 327

Dual regulator
Dual pressure



P. 319

P. 323

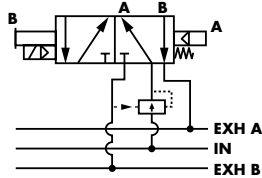
P. 327

PRA1A

PRA2D

PRA3C

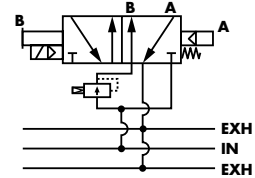
Single regulator
Single pressure



P. 331

P. 335

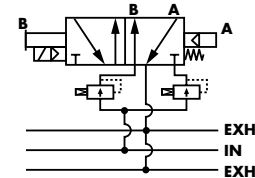
Single regulator
Dual pressure



P. 331

P. 335

Dual regulator
Dual pressure



P. 331

P. 335

PR125A

PR250B